



AUDI RS 3 LMS DSG

Tightening Torque Manual

TIGHTENING TORQUE INDEX

RS 3 LMS

Notes	3
Engine Fly Wheel And Clutch	4
Engine & Gearbox Supports	5
Turbocharger	6
Alternator	7
Fuel System	8
Intermediate Axle	10
Drive Shaft	11
Front Upright And Hub	12
Front Brake	13
Front Subframe	14
Front Wishbone	15
Front Shock Absorber	16
Steering Rack & Column	17
Rear Upright	18
Rear Shock Absorber	19
Rear Subframe	20
Pedal Box	21
Front & Rear End	22
Bucket Seat	23
Ballast Fixation	24
DSG Gearbox	25



TIGHTENING TORQUE NOTES

In this manual you will find the tightening torques of the vehicle with exploded views. Attached to the different parts there is a reference with some information. There is an exemple here below to understand how to read it:

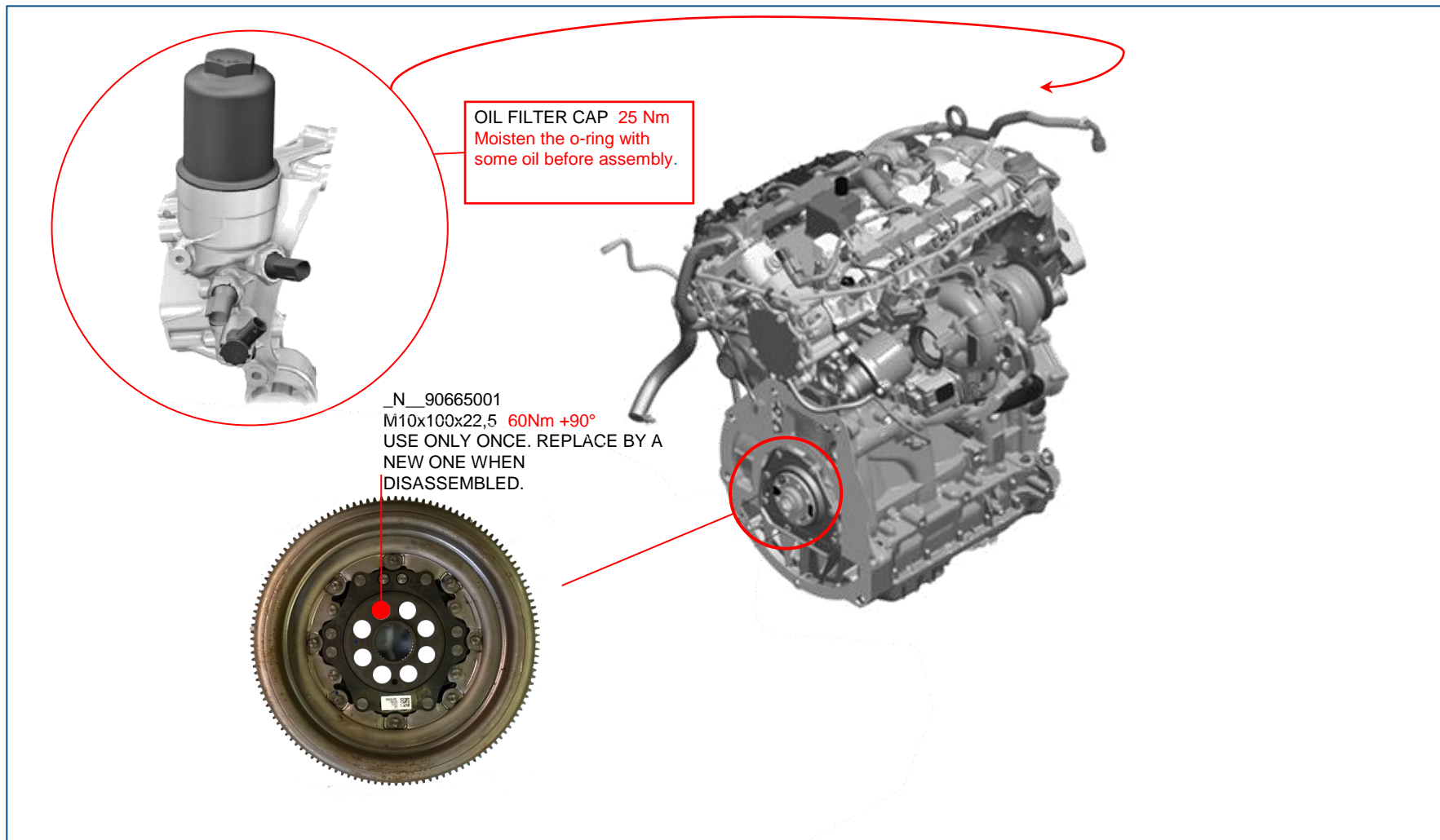
TO BODY SHELL	←	It Explains Where The Part Is Assembled On.
VN0001161339	←	Catalogue Reference
BOLT	←	Name
M10x30 60 Nm	←	Size & Torque
LOCTITE 243 Blue	←	Additional Useful Information

Besides the reference, the bolts, nuts, spacers and bushes may be marked with a color spot next to them. The ones with the same color spot have the same information and thus the same tightening torque. If no color spot is found means that the part is a single unit. The colors are common in one single page and are not related between different pages.

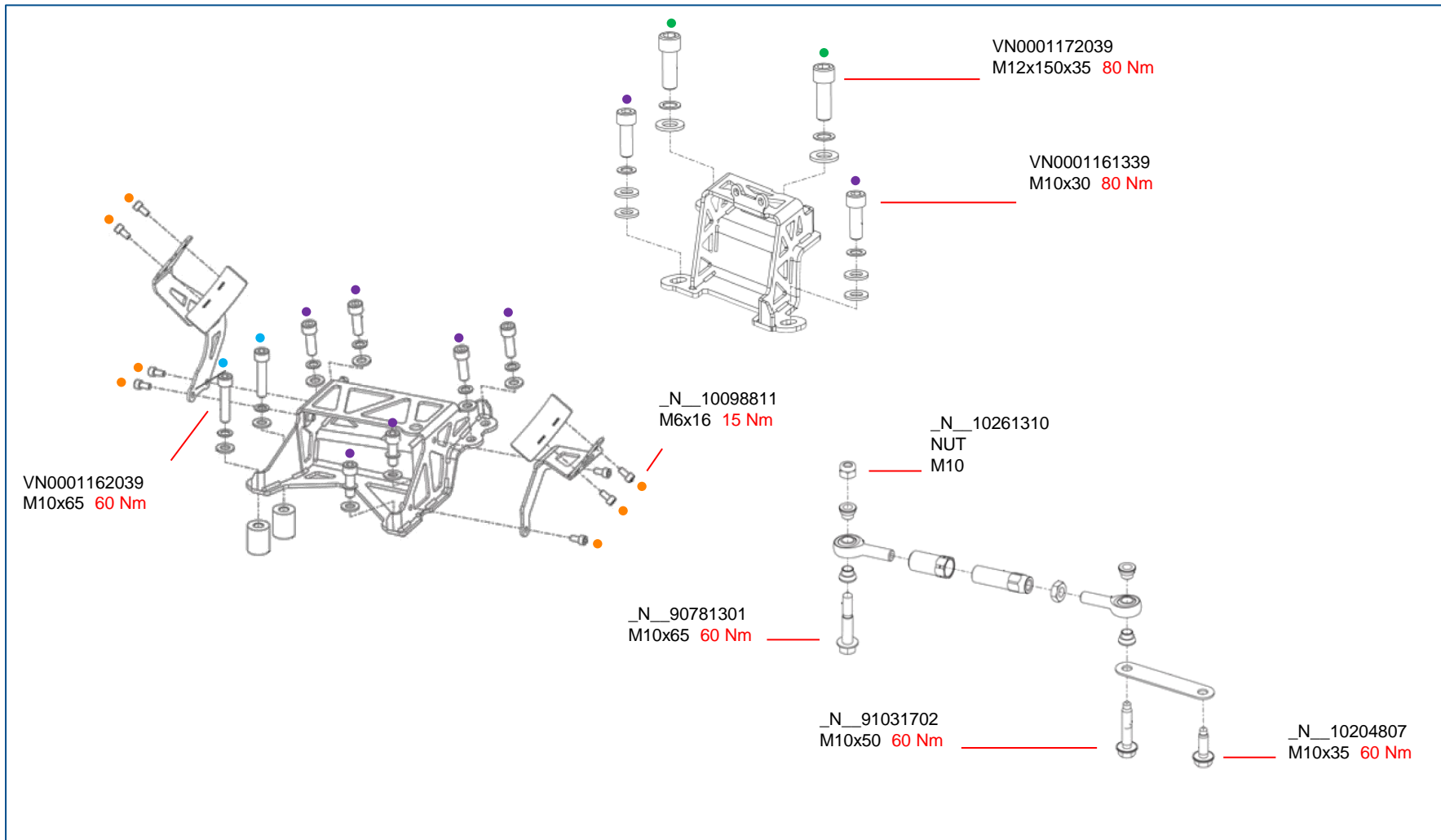
Spot colors: ● ● ● ● ● ●

TIGHTENING TORQUE ENGINE FLY WHEEL AND CLUTCH

RS 3 LMS

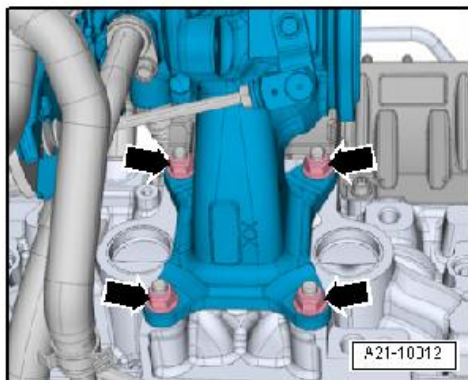


TIGHTENING TORQUE ENGINE & GEARBOX SUPPORTS



TIGHTENING TORQUE TURBOCHARGER

RS 3 LMS

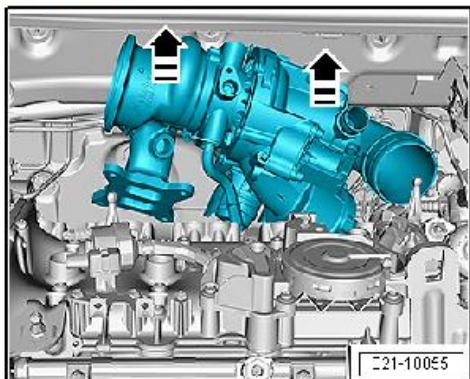


TO REPLACE THE TURBOCHARGER

USE ALWAYS:

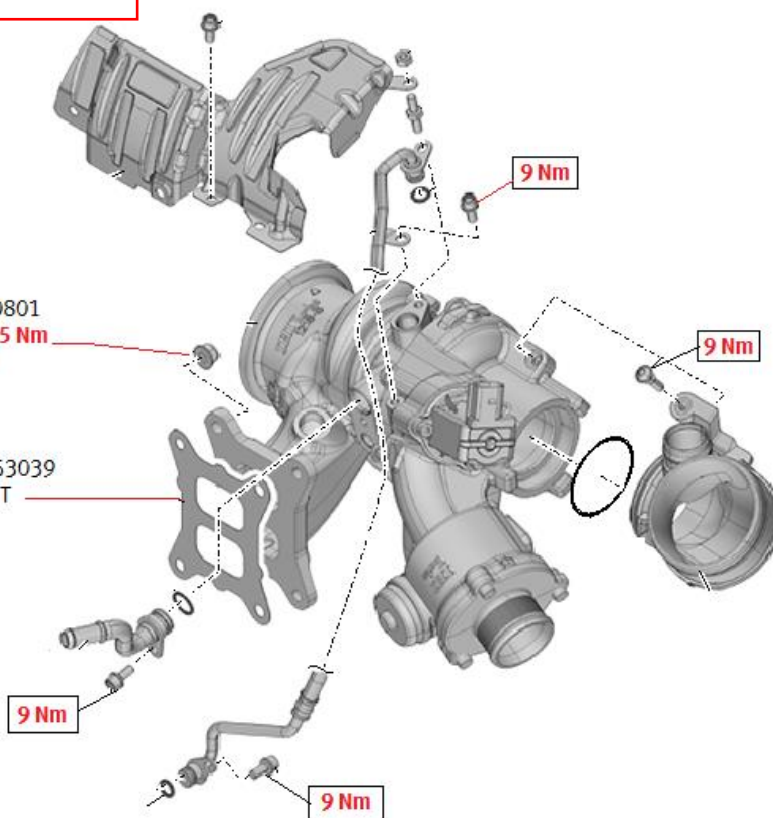
NEW EXHAUST GASKET
NEW NUTS
NEW EXHAUST CLAMP

TAKE OUT SENSE



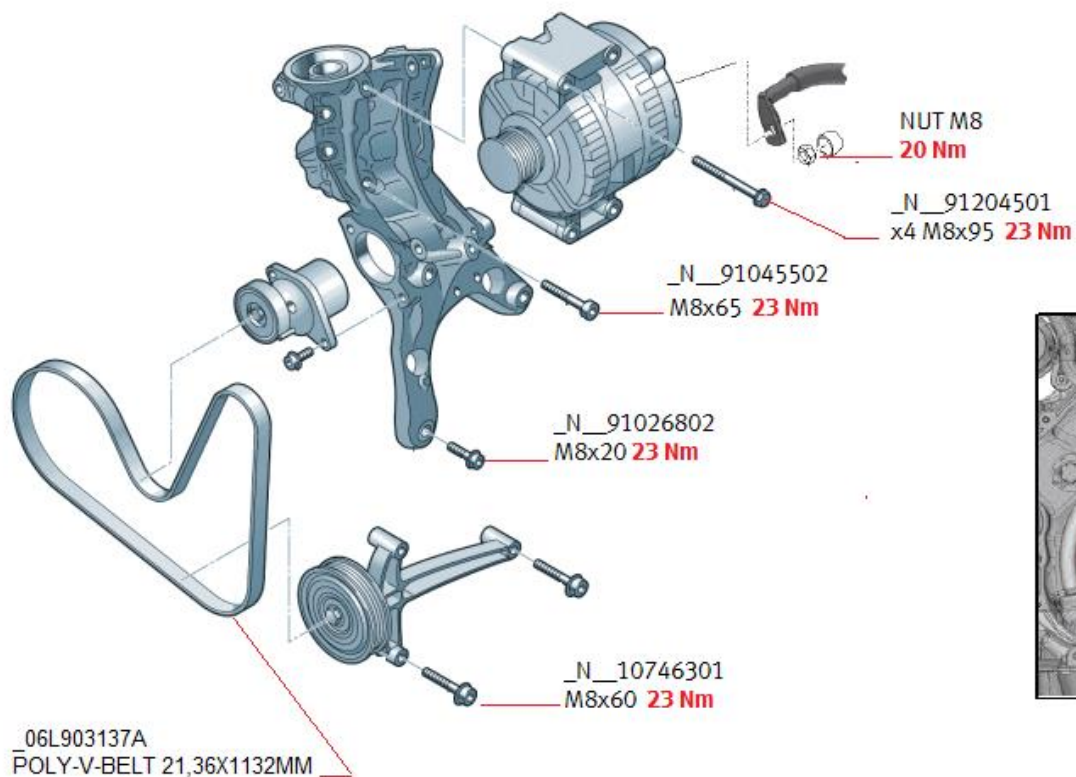
_N_91130801
NUT M8 **25 Nm**
Cu grease

_06L253039
GASKET

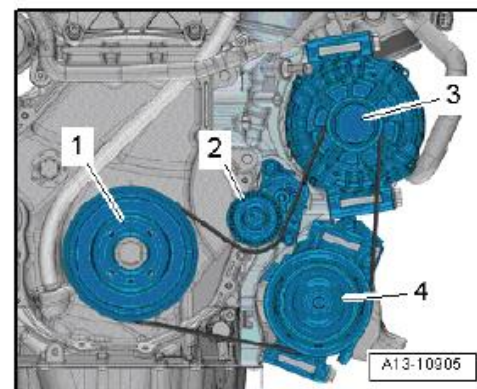


TIGHTENING TORQUE ALTERNATOR

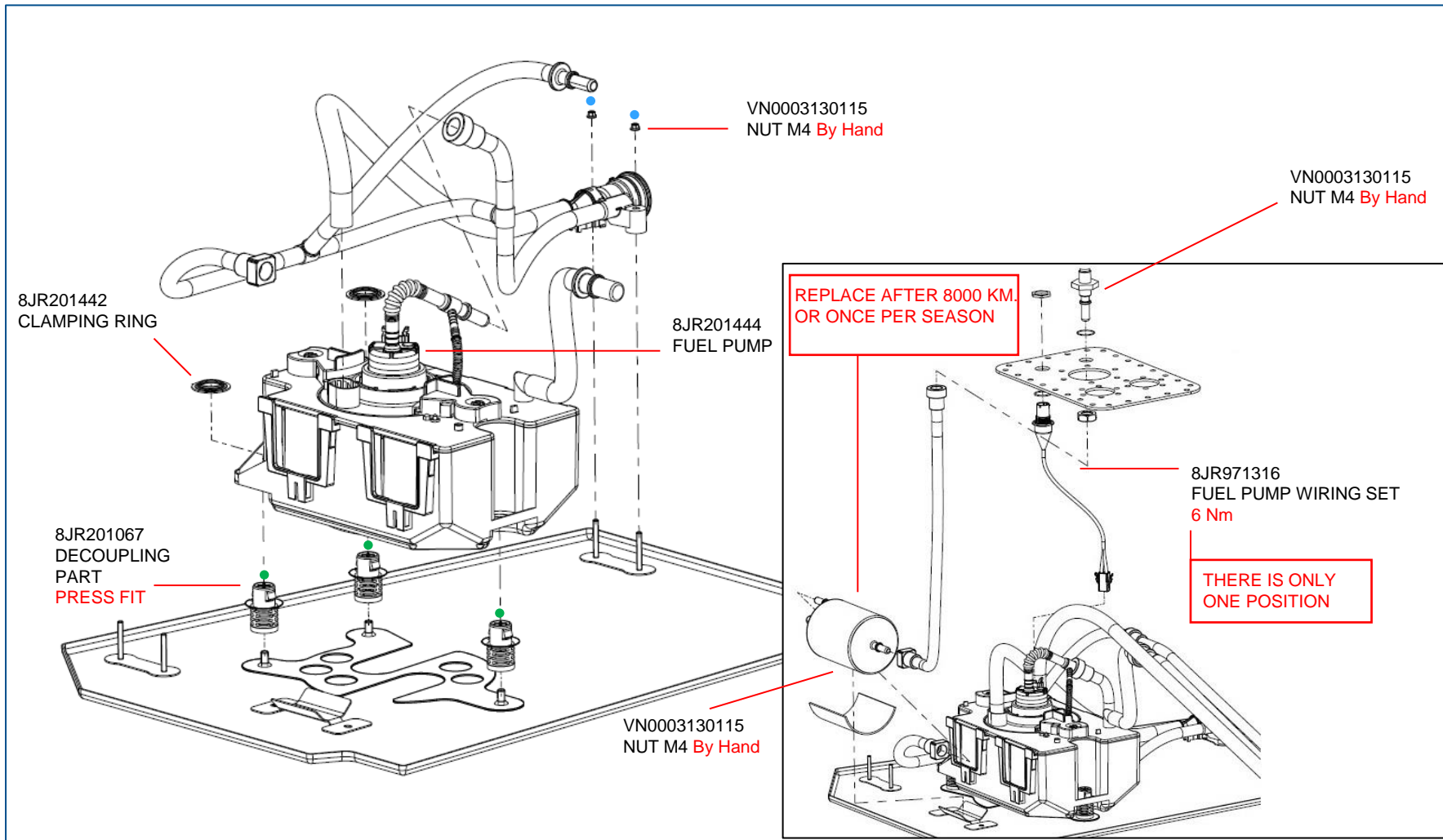
RS 3 LMS



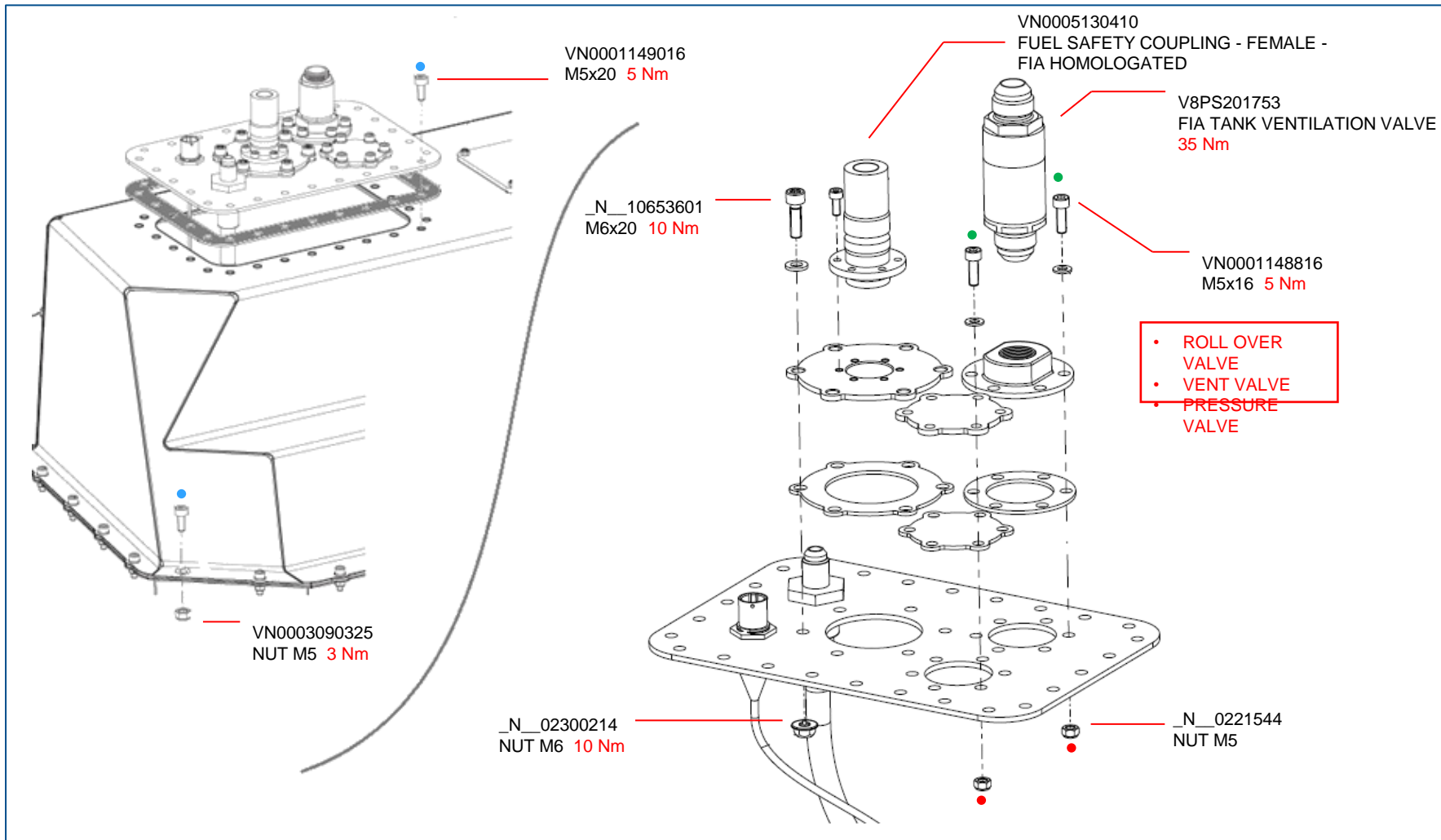
- 1** Vibration damper
140 Nm
- 2** Tensioner for V belt
- 3** Poly-V bell puley to alternator
M10 **65 Nm**



TIGHTENING TORQUE FUEL SYSTEM

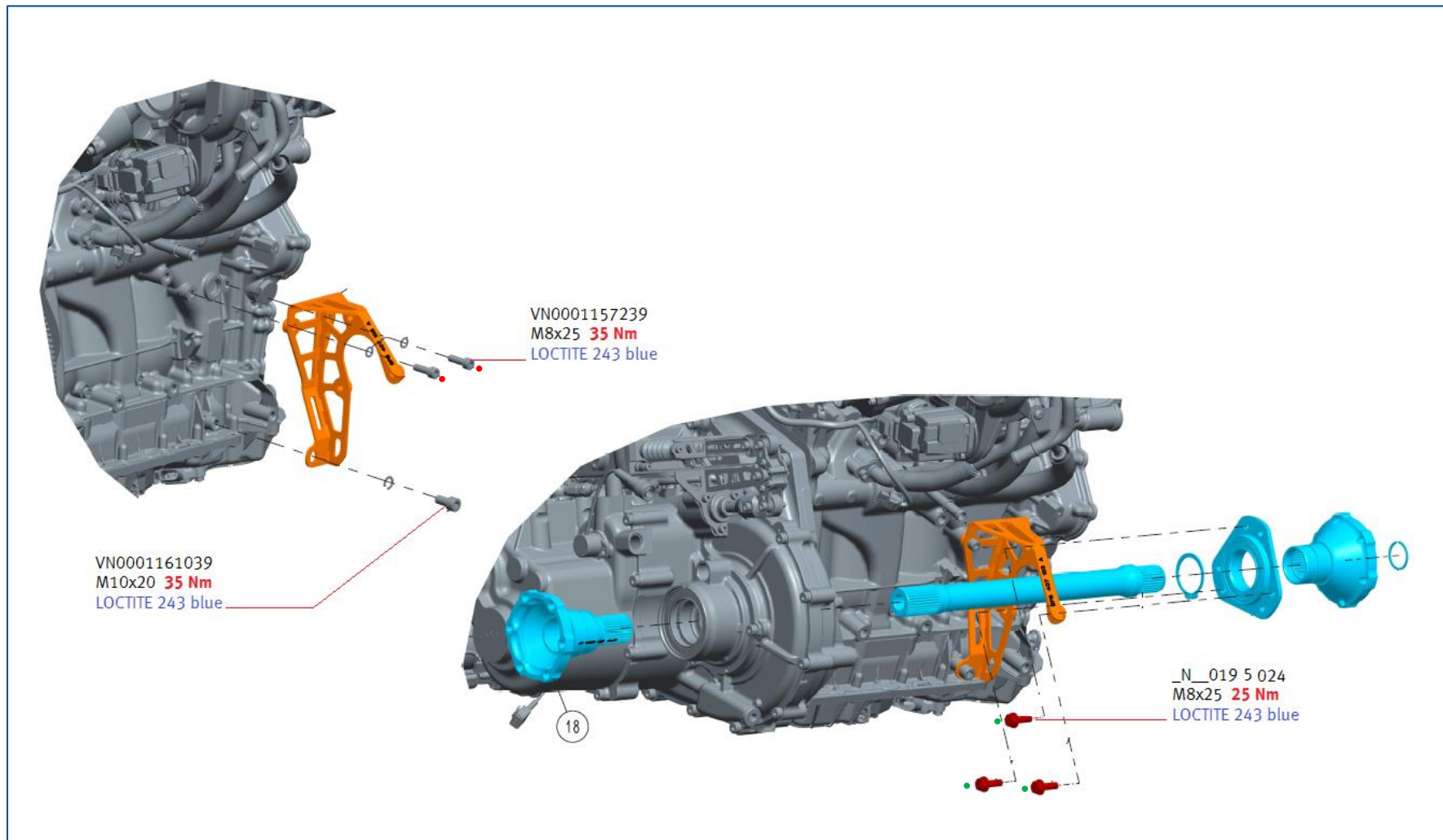


TIGHTENING TORQUE FUEL SYSTEM



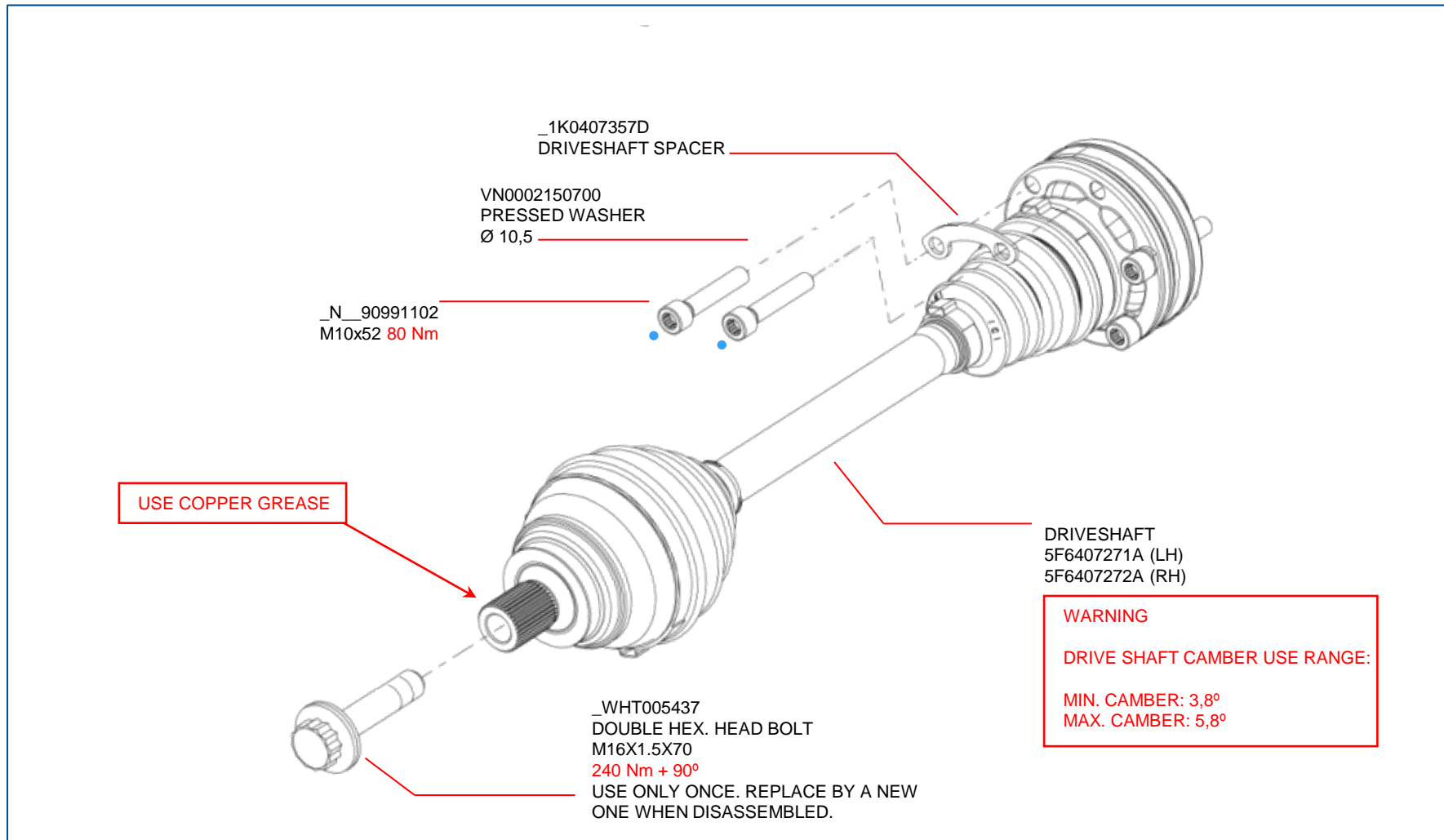
TIGHTENING TORQUE INTERMEDIATE AXLE

RS 3 LMS

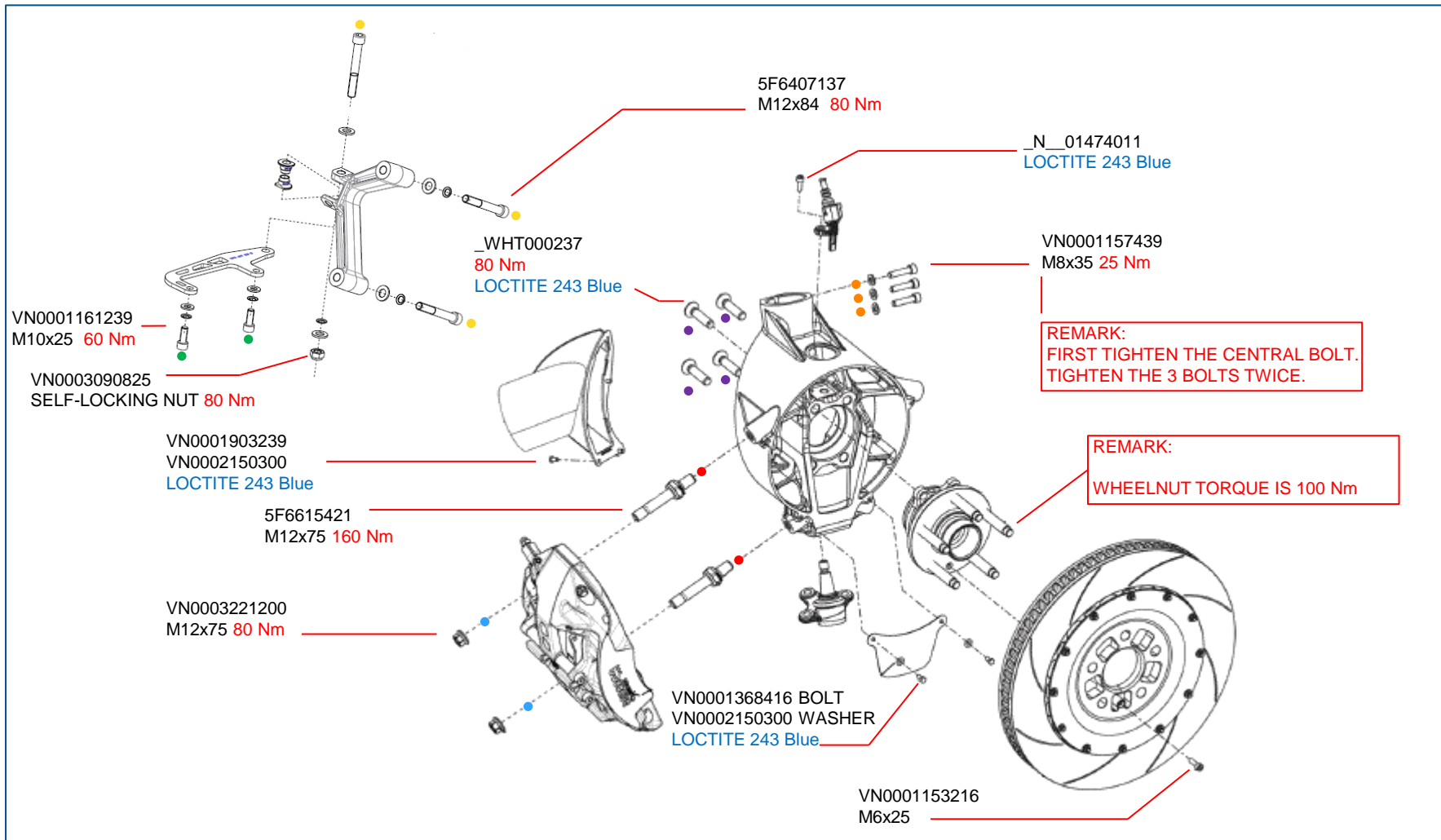


TIGHTENING TORQUE DRIVE SHAFT

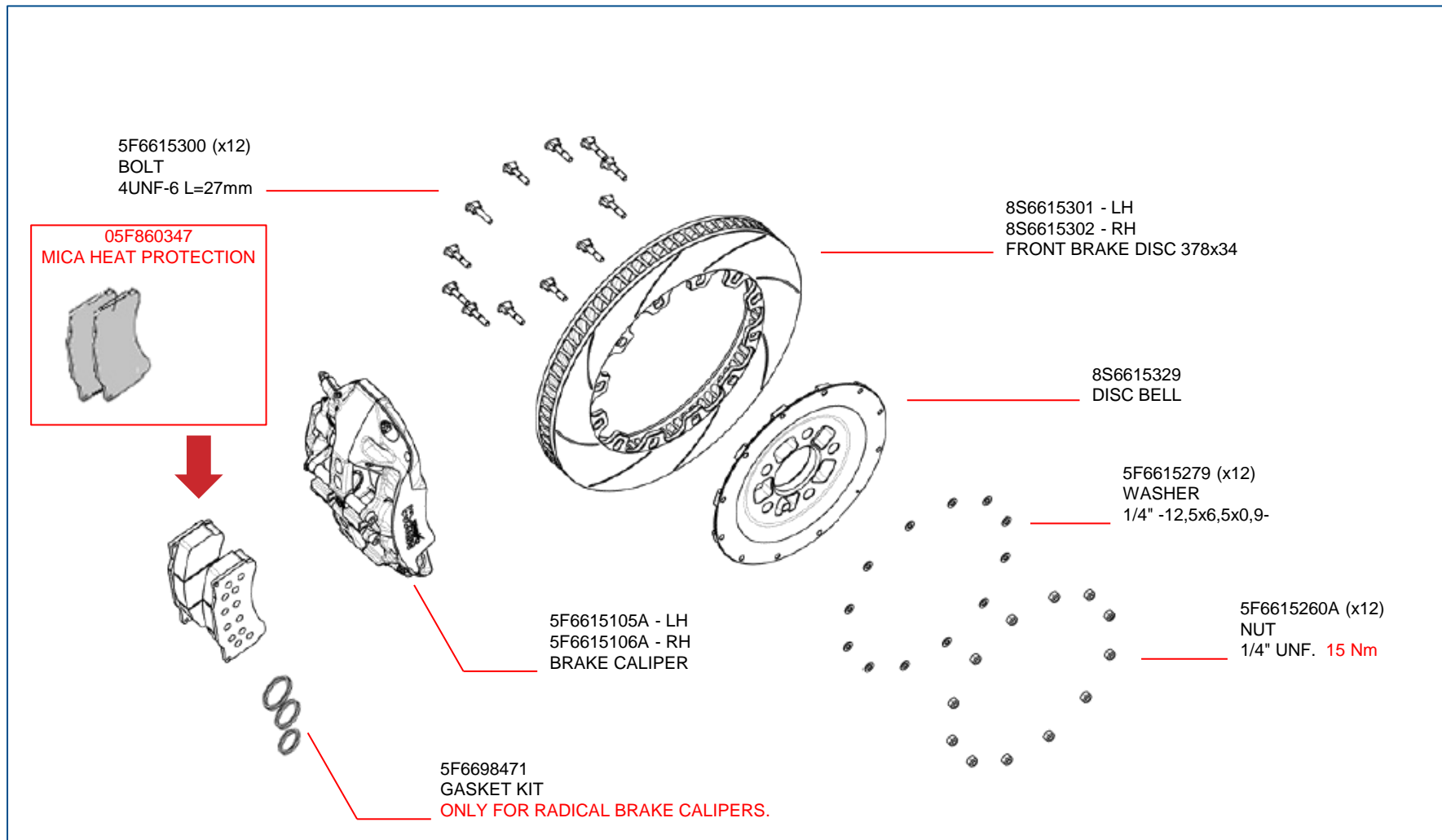
RS 3 LMS



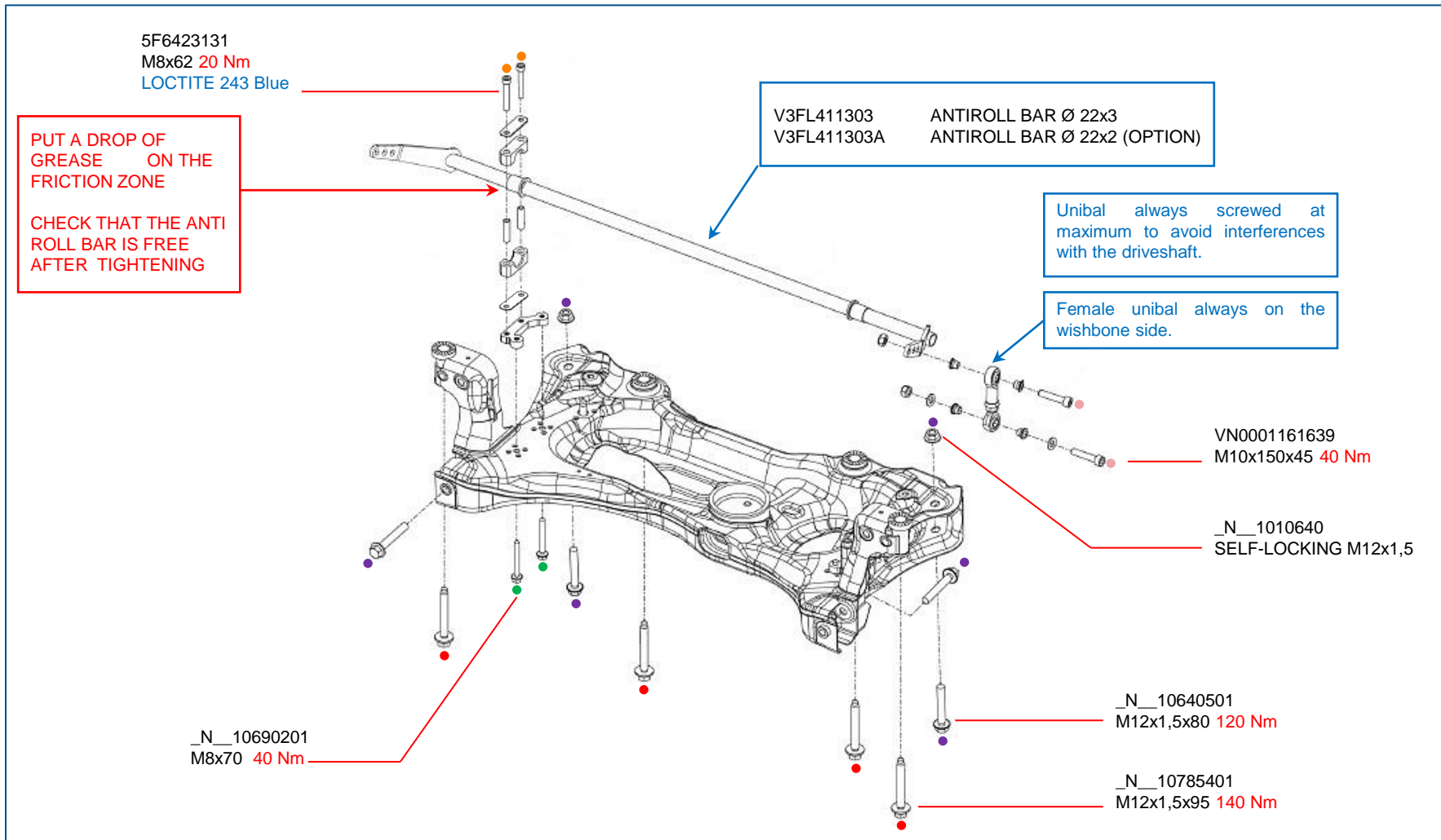
TIGHTENING TORQUE FRONT UPRIGHT AND HUB



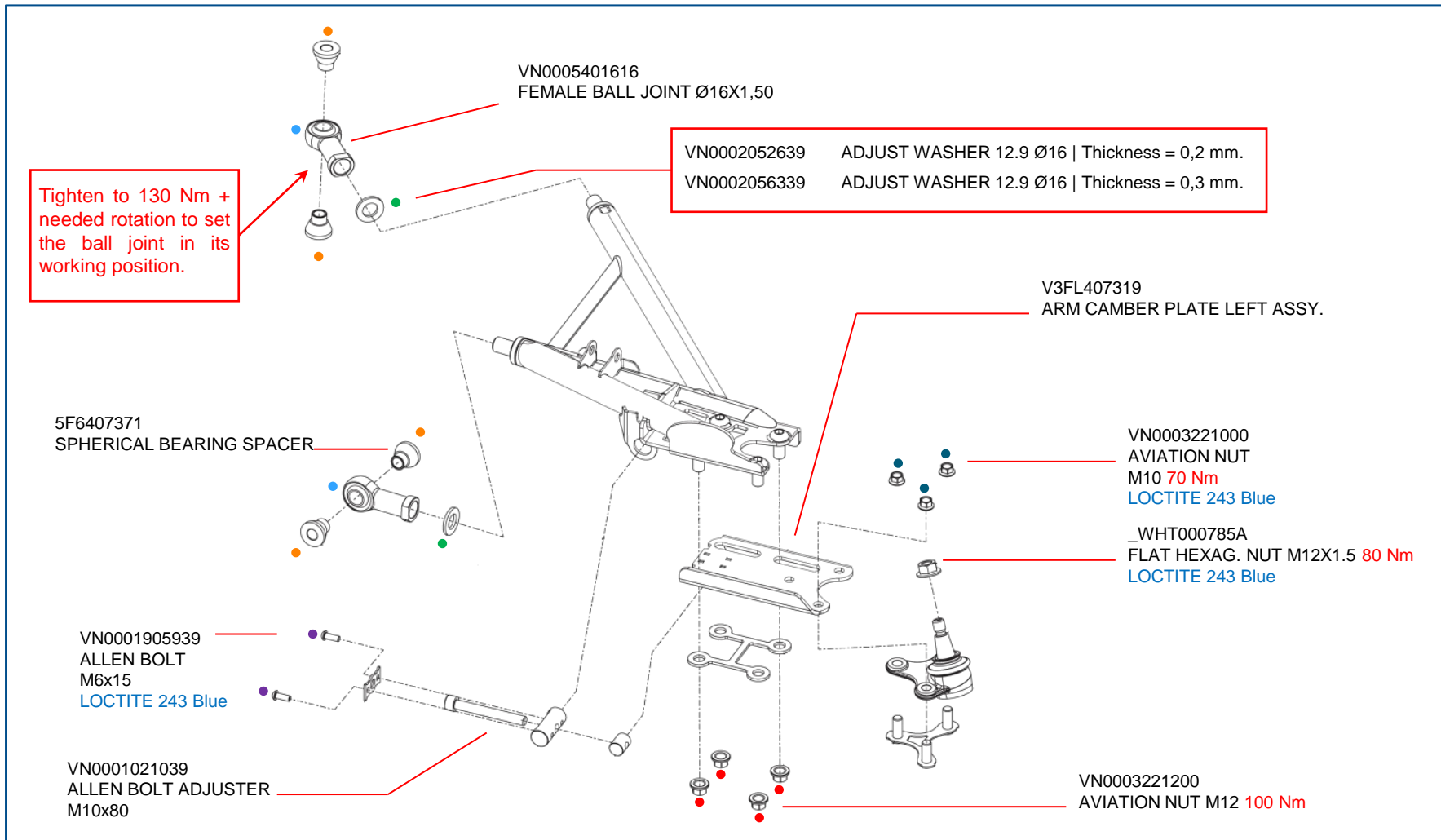
TIGHTENING TORQUE FRONT BRAKE



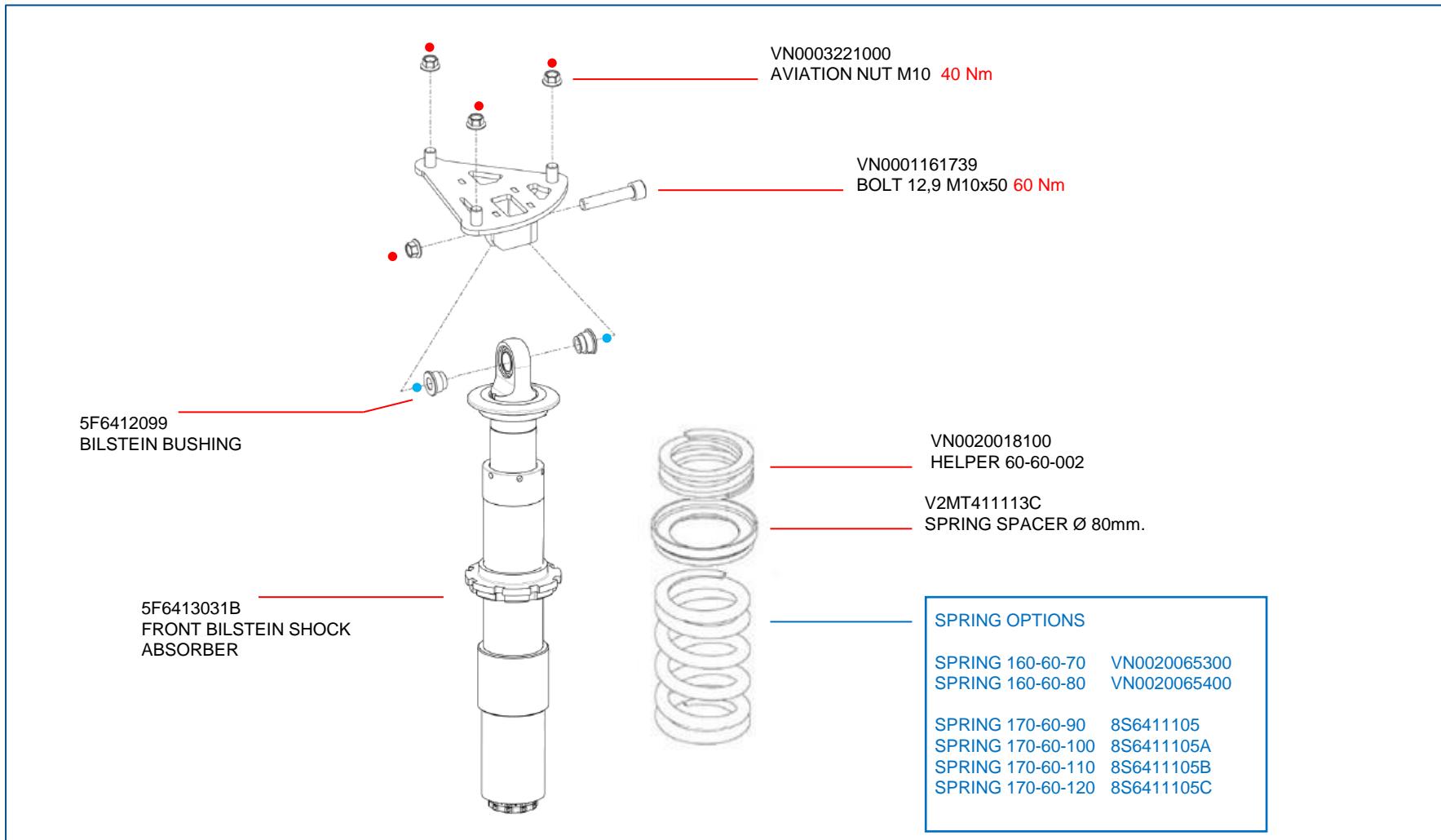
TIGHTENING TORQUE FRONT SUBFRAME



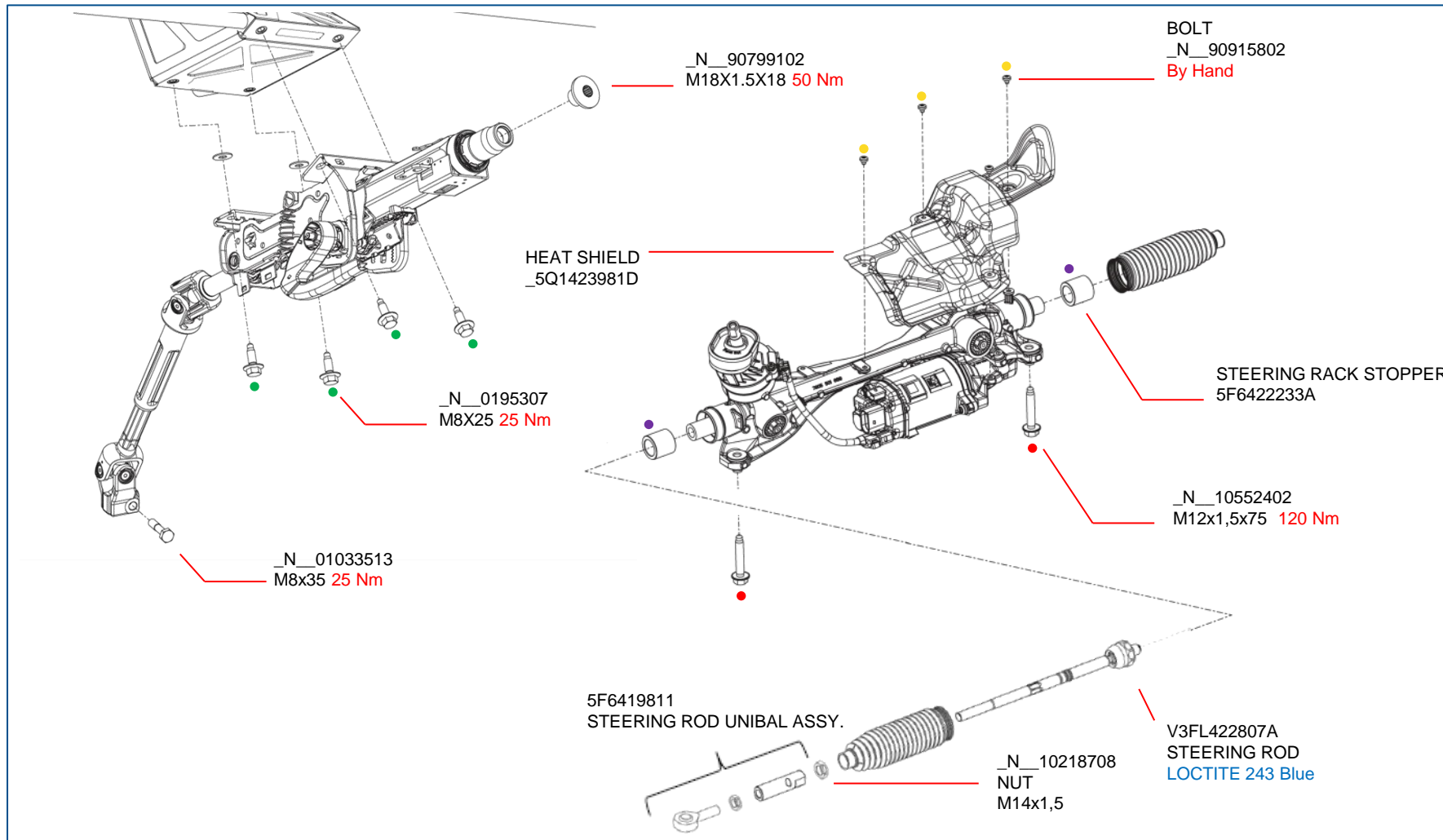
TIGHTENING TORQUE FRONT WISHBONE



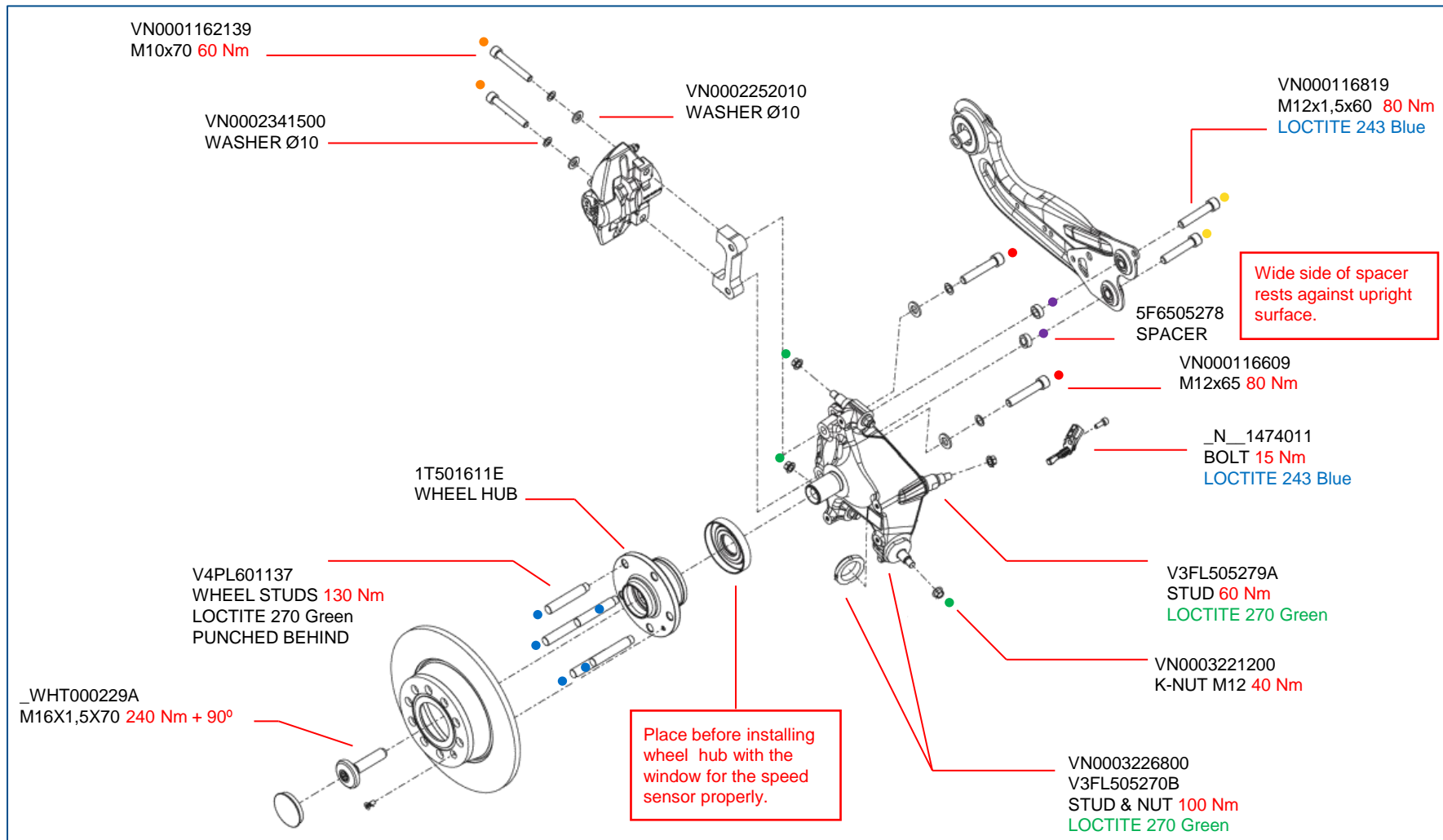
TIGHTENING TORQUE FRONT SHOCK ABSORBER



TIGHTENING TORQUE STEERING RACK & COLUMN

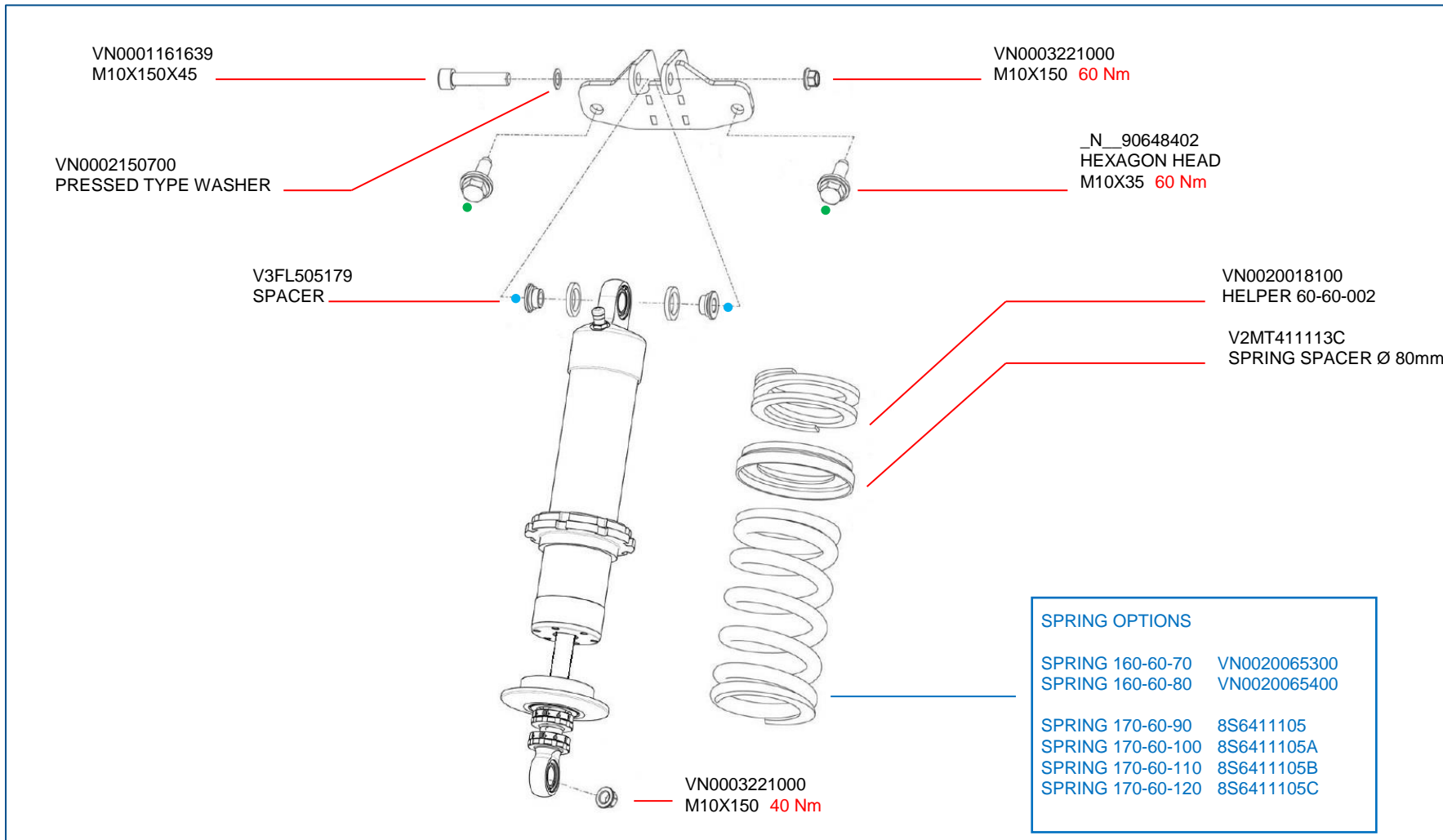


TIGHTENING TORQUE REAR UPRIGHT

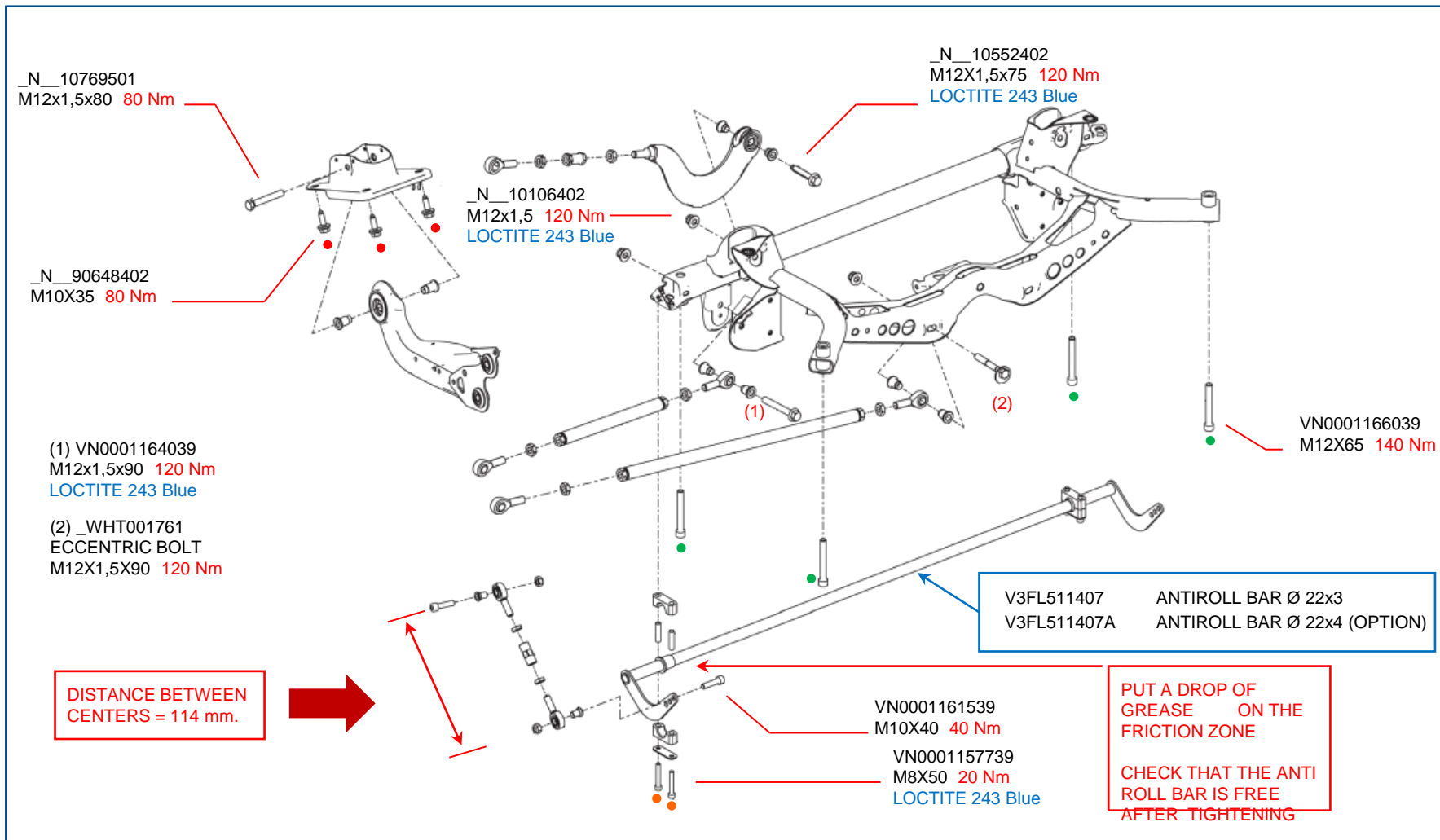


TIGHTENING TORQUE

REAR SHOCK ABSORBER

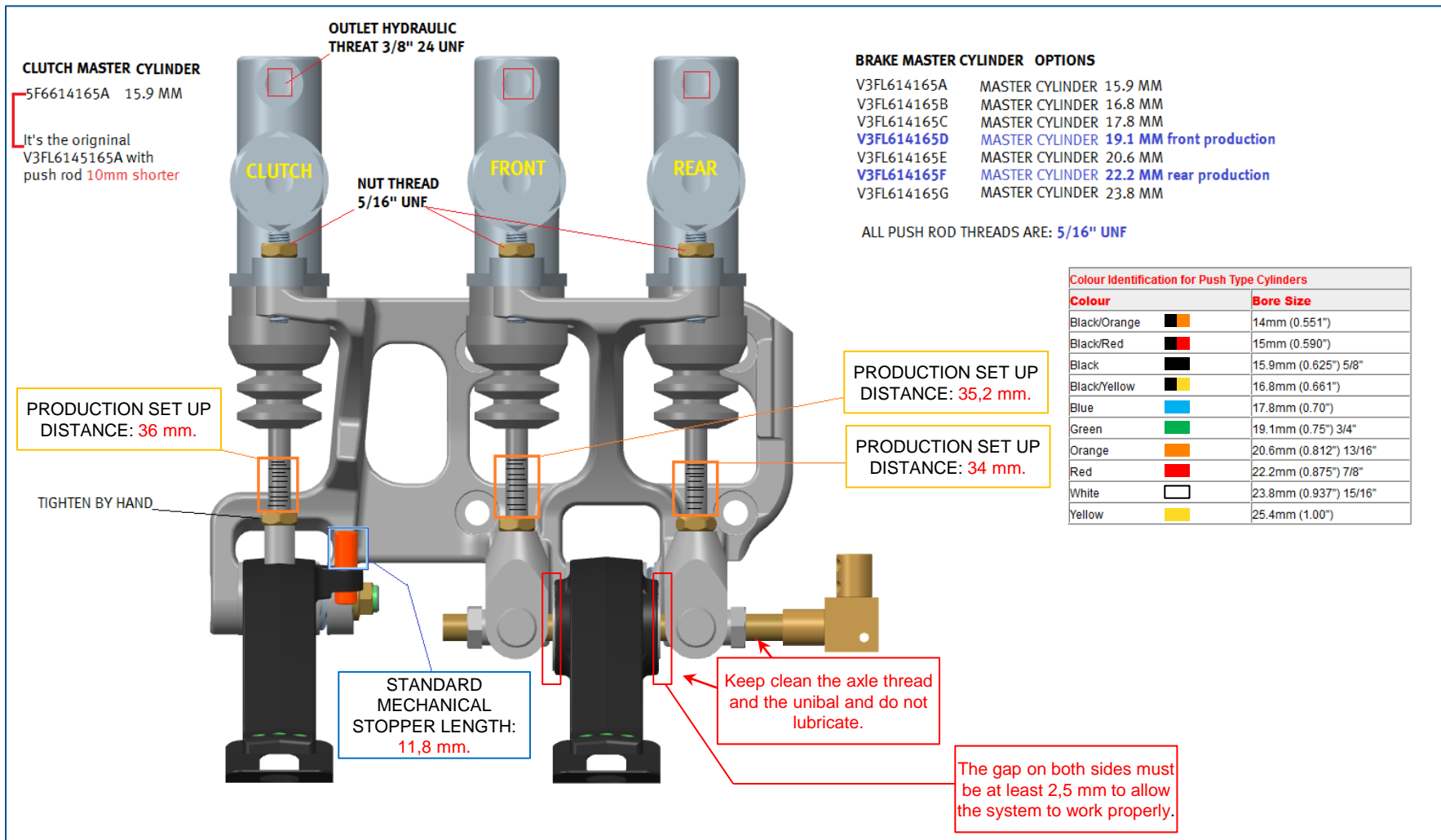


TIGHTENING TORQUE REAR SUBFRAME



TIGHTENING TORQUE

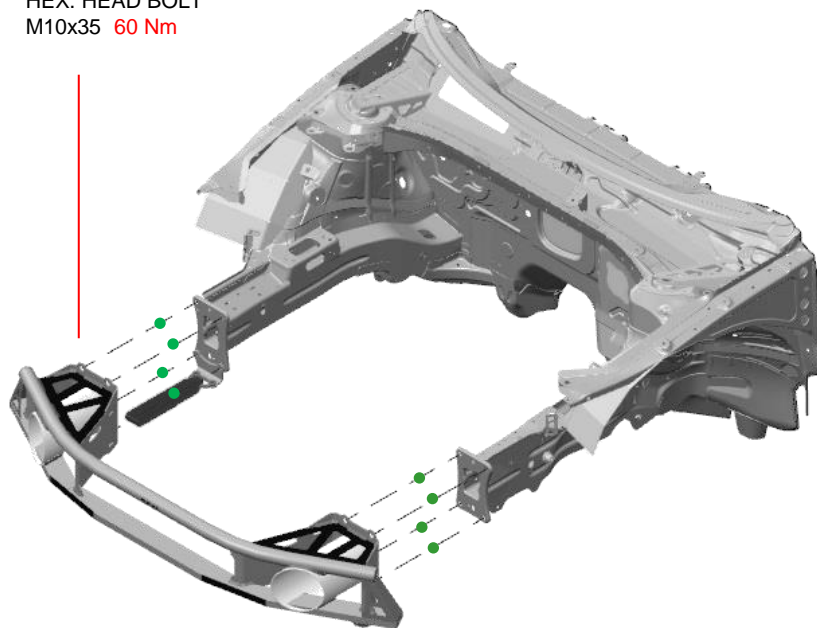
PEDAL BOX



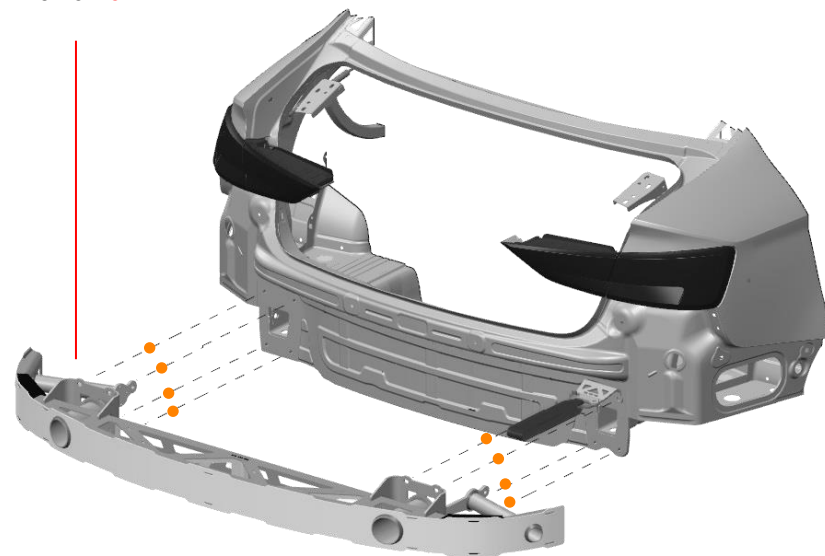
TIGHTENING TORQUE FRONT & REAR END

RS 3 LMS

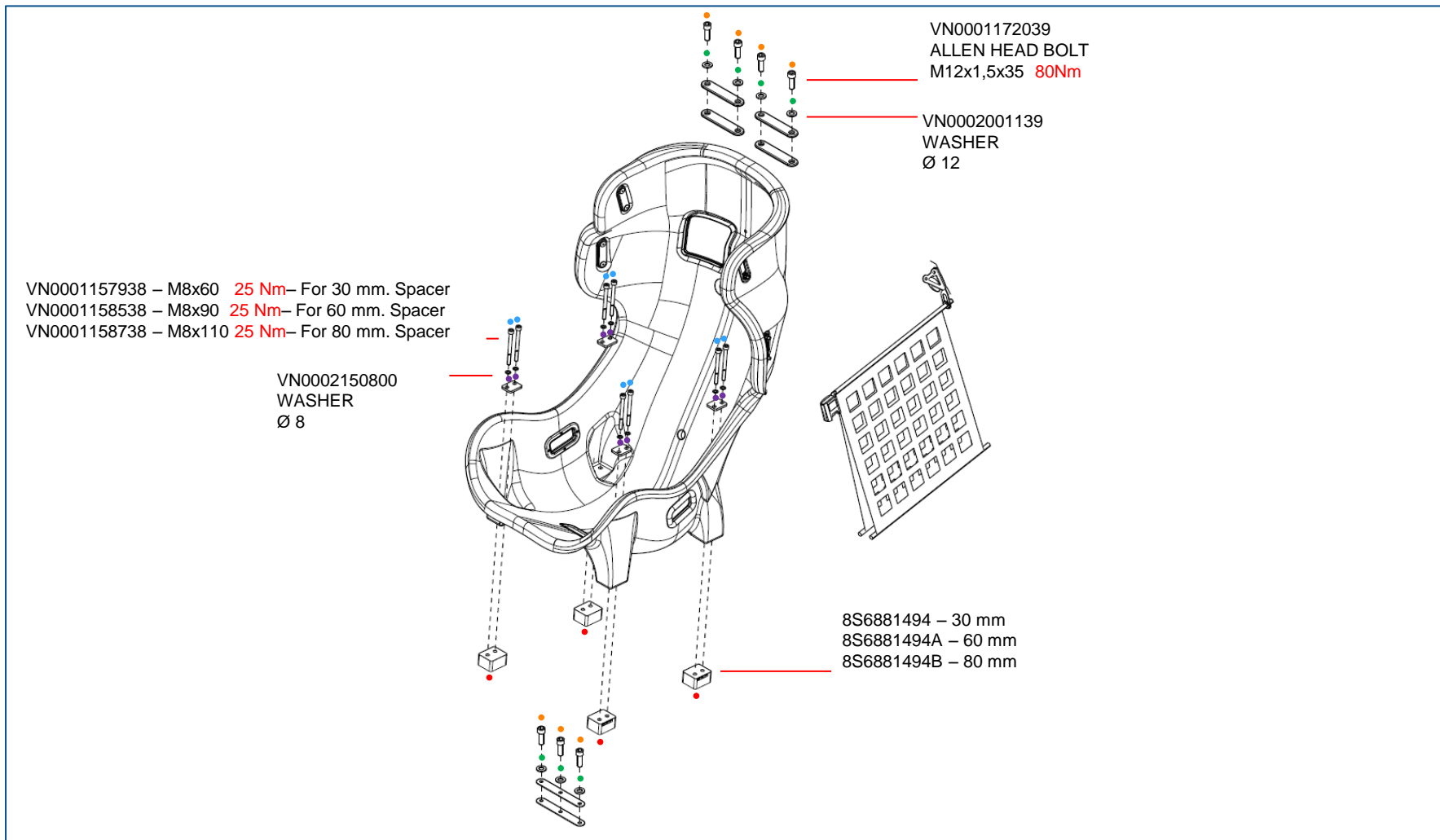
N 91196402
HEX. HEAD BOLT
M10x35 **60 Nm**



N 0195307
HEX. HEAD BOLT
M8x25 **25 Nm**



TIGHTENING TORQUE BUCKET SEAT



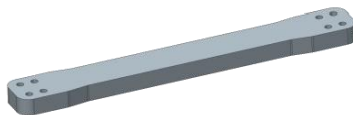
TIGHTENING TORQUE

BALLAST FIXATION

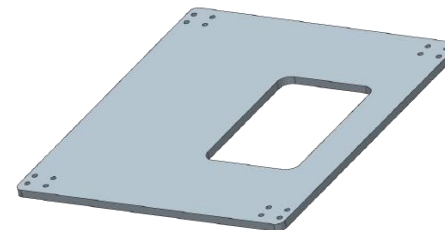
In the event that any car needs to add some extra weight, there are different shapes and sizes to be combined between them. They are detailed here below:



8S6861721
1 KG BALLAST



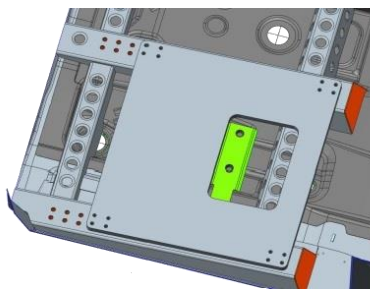
8S6861721A
3 KG BALLAST



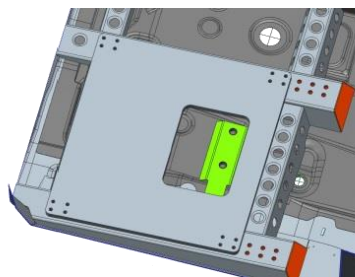
8S6861721B – 5 KG
8S6861721C – 10 KG
8S6861721D– 20 KG
5, 10 & 20 KG BALLAST

To fix the different ballasts on the car, it can be done either in the co-driver and driver position and in front or rear location. In order to make a safe assembly, M8 bolts with a minimum of 12 mm thread depth is recommended.

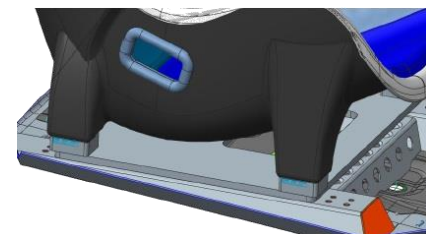
Front Location



Rear Location



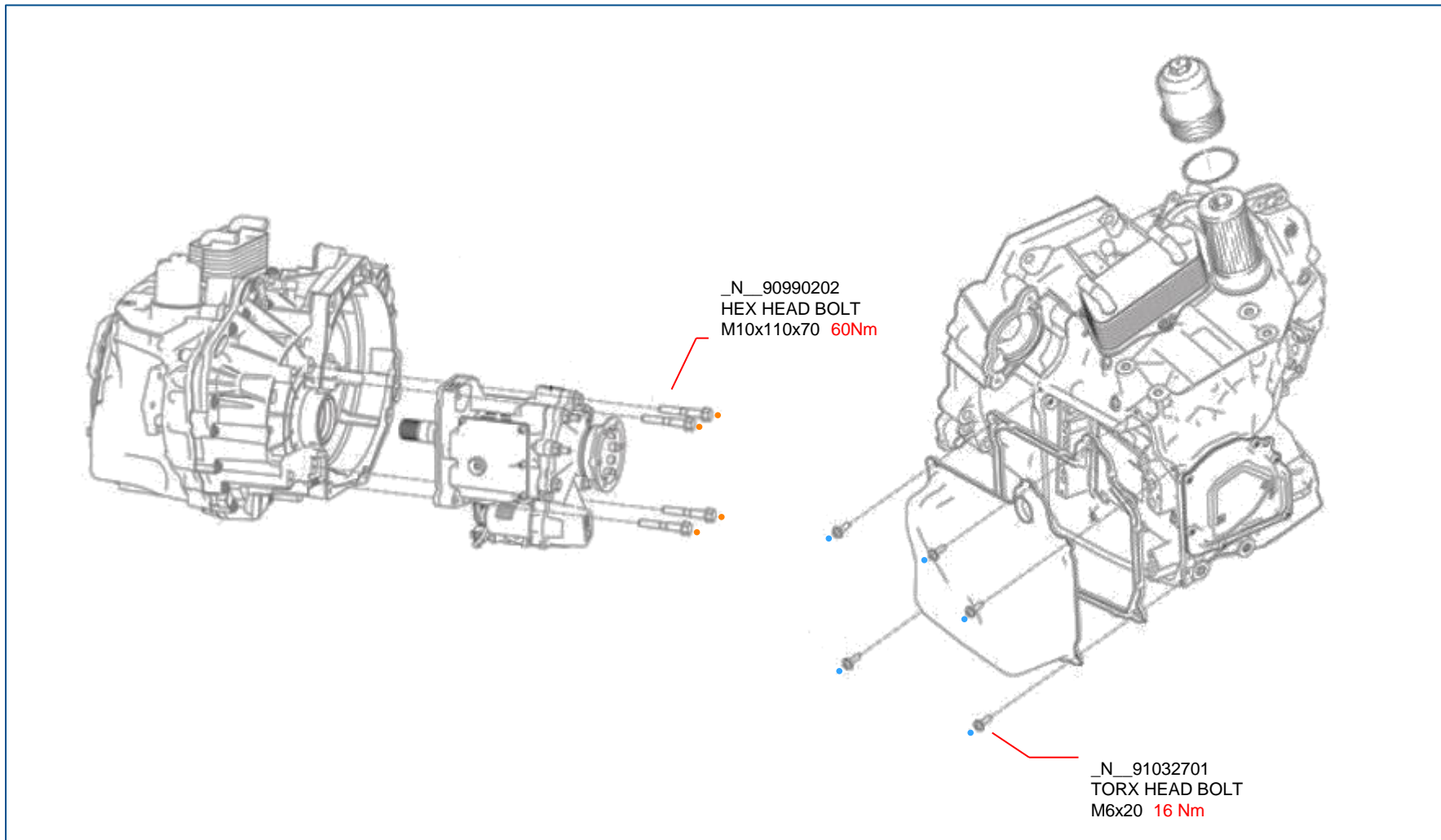
Driver Position



TIGHTENING TORQUE

DSG GEARBOX

RS 3 LMS



TIGHTENING TORQUE

DSG GEARBOX

