



 Audi Sport

RS 3 LMS

TECHNICAL NOTE 02/2018

New Steering Wheel

14.06.2018

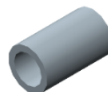
Delivered Parts

The reference 8V6 419 093, of the new steering wheel model, includes the following parts:

- 1 x **Steering wheel**



- 4 x **Bushings Ø7.8 x 13mm**



Parts to be modified

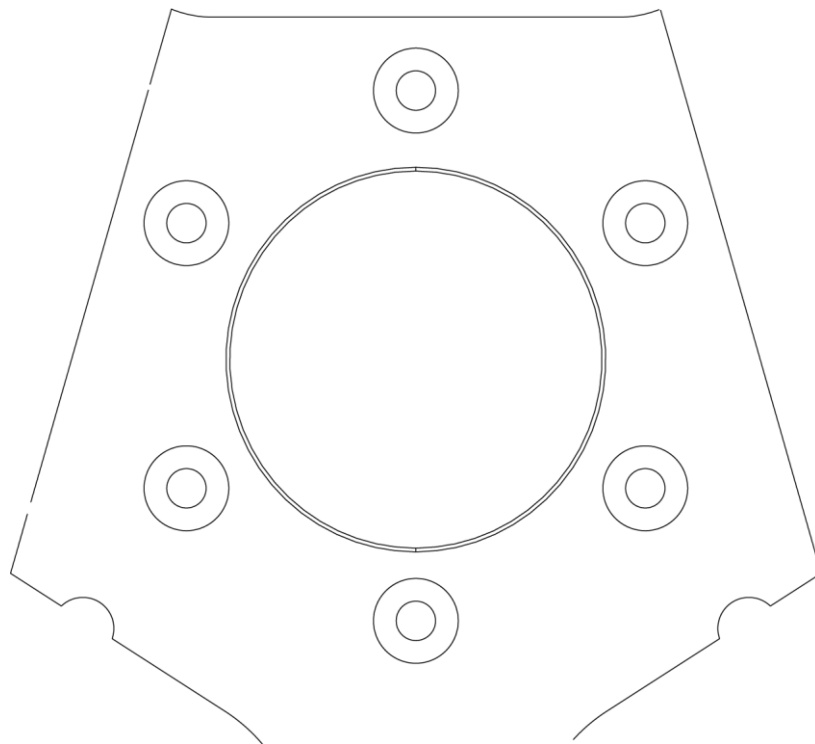
- **Steering wheel.** It has to be modified in order to be able to assemble the electronic module using the template shown on the next page with scale 1:1.



- **Bushings $\varnothing 7.8 \times 13\text{mm}$.** Two of the four bushings have to be cut to the length of 7mm.

Parts to be modified

- ***Steering wheel cutting template***



New Steering Wheel Assembly

➤ ***New parts needed for the assembly:***

| Part Number | Description | Quantity | Comment |
|-------------|--------------------------|----------|----------------------------------|
| 1 | Steering Wheel | 1 | After modification has been done |
| 2 | Bushing Ø7.8 x 13 mm | 2 | Standard parts |
| 3 | Bushing Ø7.8 x 7 mm | 2 | After modification has been done |
| 4 | Allen bolt M4x25 DIN 912 | 2 | Parts not delivered |
| 5 | Allen bolt M4x16 DIN 912 | 2 | Parts not delivered |

