



---

**AUDI RS 3 LMS SEQ.**

**Tightening Torque Manual**

# TIGHTENING TORQUE INDEX

**RS 3 LMS**

Notes	_____	3
Engine Fly Wheel And Clutch	_____	4
Engine & Gearbox Supports	_____	5
Turbocharger	_____	6
Alternator	_____	7
Fuel System	_____	8
Intermediate Axle	_____	10
Drive Shaft	_____	11
Gear Shift Actuator	_____	12
Front Upright And Hub	_____	13
Front Brake	_____	14
Front Subframe	_____	15
Front Wishbone	_____	16
Front Shock Absorber	_____	17
Steering Rack & Column	_____	18
Rear Upright	_____	19
Rear Shock Absorber	_____	20
Rear Subframe	_____	21
Pedal Box	_____	22
Front & Rear End	_____	23
Bucket Seat	_____	24
Ballast Fixation	_____	25
Sadev Gearbox	_____	
General View & Info	_____	26
Supports	_____	27
Casings	_____	29
Engine Mounting	_____	30
Barrel Position Sensor	_____	31



# TIGHTENING TORQUE NOTES

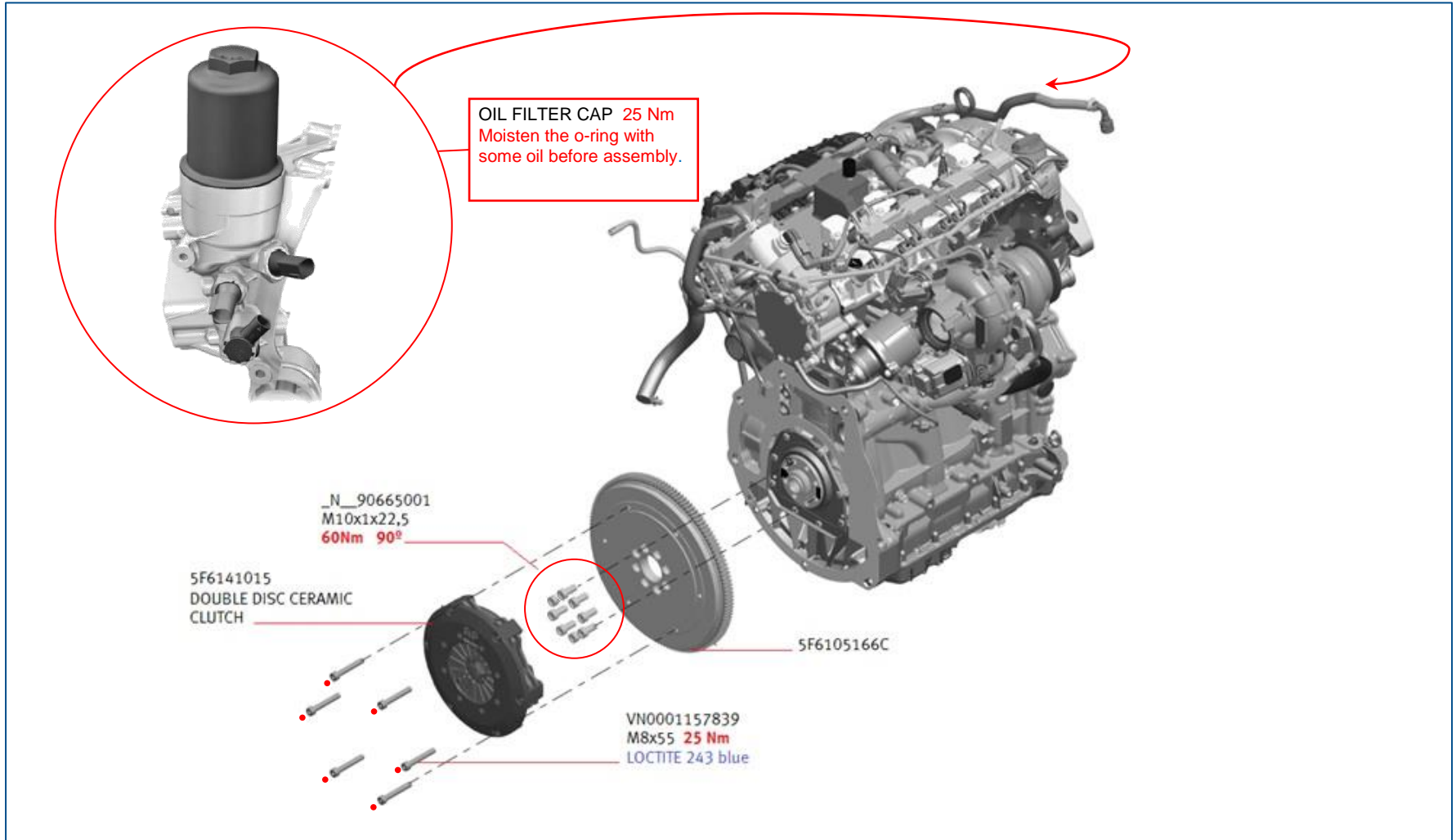
In this manual you will find the tightening torques of the vehicle with exploded views. Attached to the different parts there is a reference with some information. There is an exemple here below to understand how to read it:

TO BODY SHELL	←	It Explains Where The Part Is Assembled On.
VN0001161339	←	Catalogue Reference
BOLT	←	Name
M10x30 <b>60 Nm</b>	←	Size & Torque
LOCTITE 243 <b>Blue</b>	←	Additional Useful Information

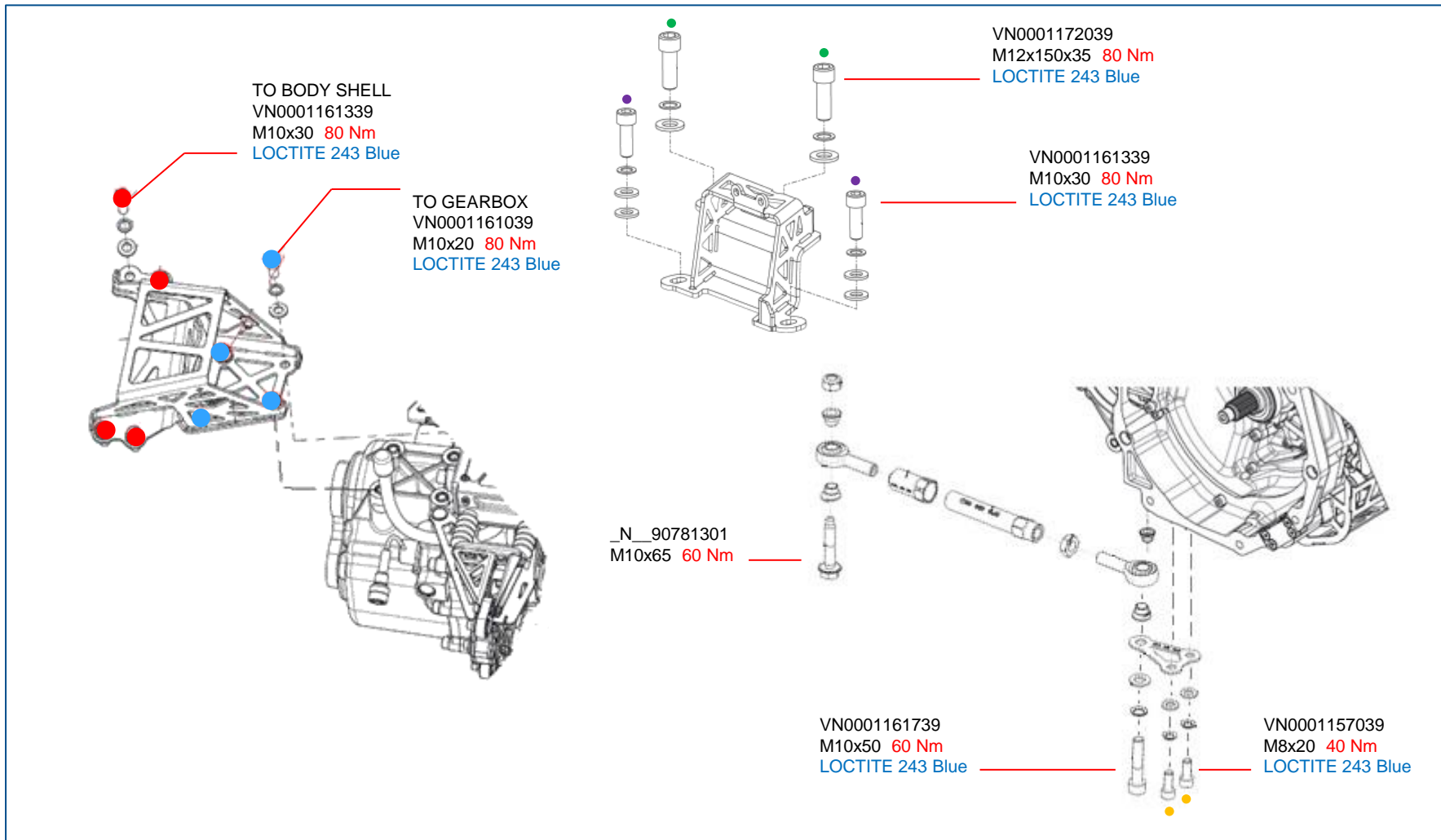
Besides the reference, the bolts, nuts, spacers and bushes may be marked with a color spot next to them. The ones with the same color spot have the same information and thus the same tightening torque. If no color spot is found means that the part is a single unit. The colors are common in one single page and are not related between different pages.

Spot colors: ● ● ● ● ● ●

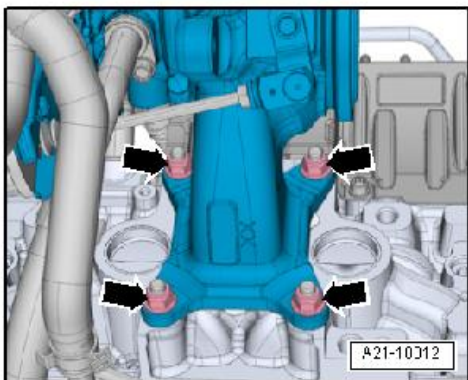
# TIGHTENING TORQUE ENGINE FLY WHEEL AND CLUTCH



# TIGHTENING TORQUE ENGINE & GEARBOX SUPPORTS



# TIGHTENING TORQUE TURBOCHARGER

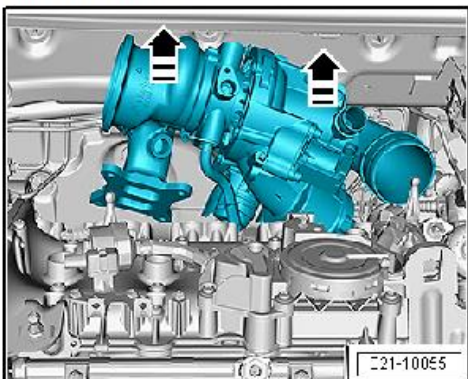


TO REPLACE THE TURBOCHARGER

USE ALWAYS:

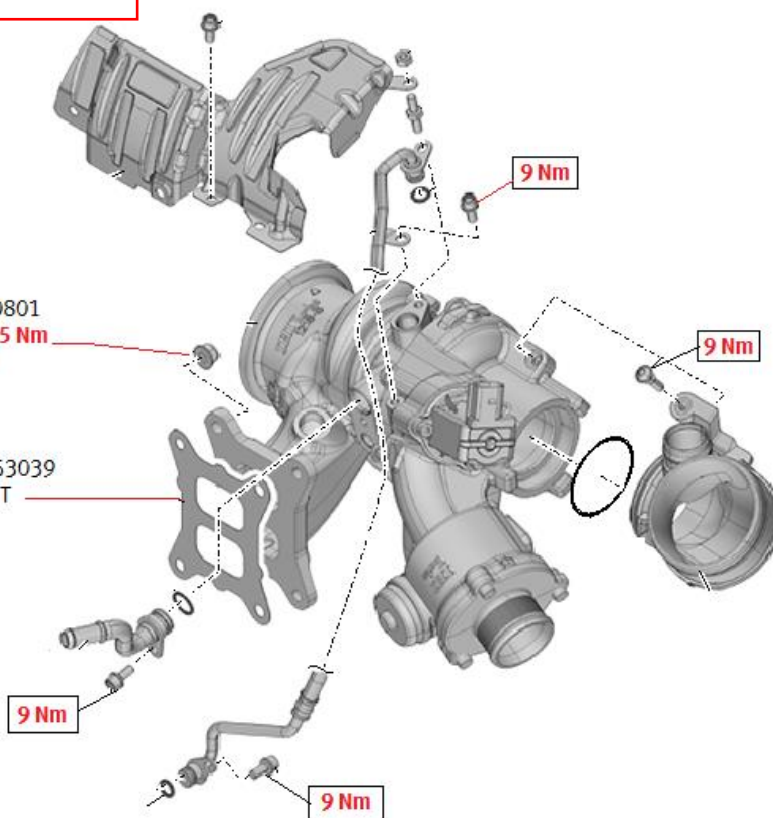
NEW EXHAUST GASKET  
NEW NUTS  
NEW EXHAUST CLAMP

TAKE OUT SENSE



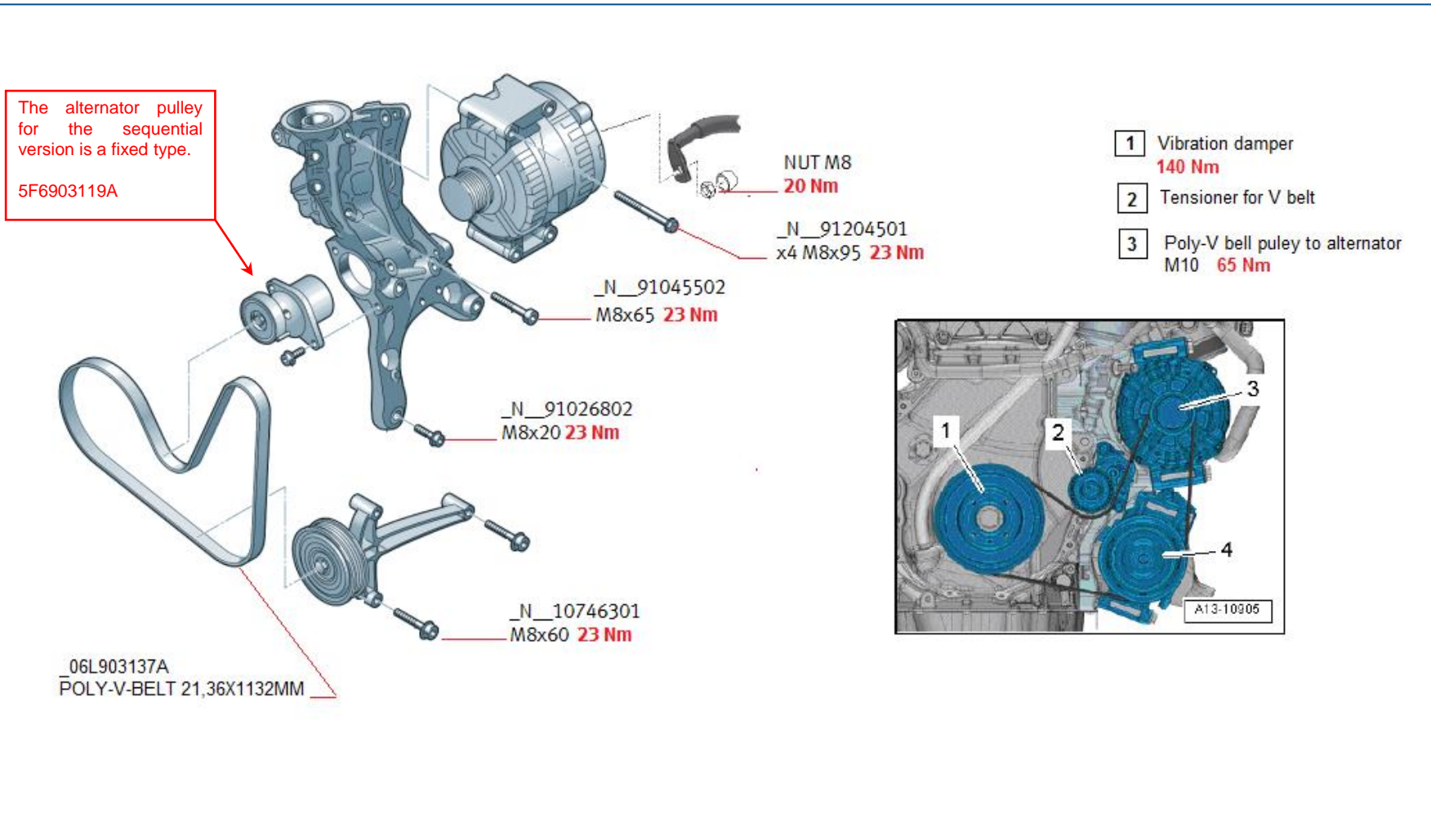
\_N\_91130801  
NUT M8 **25 Nm**  
Cu grease

\_06L253039  
GASKET

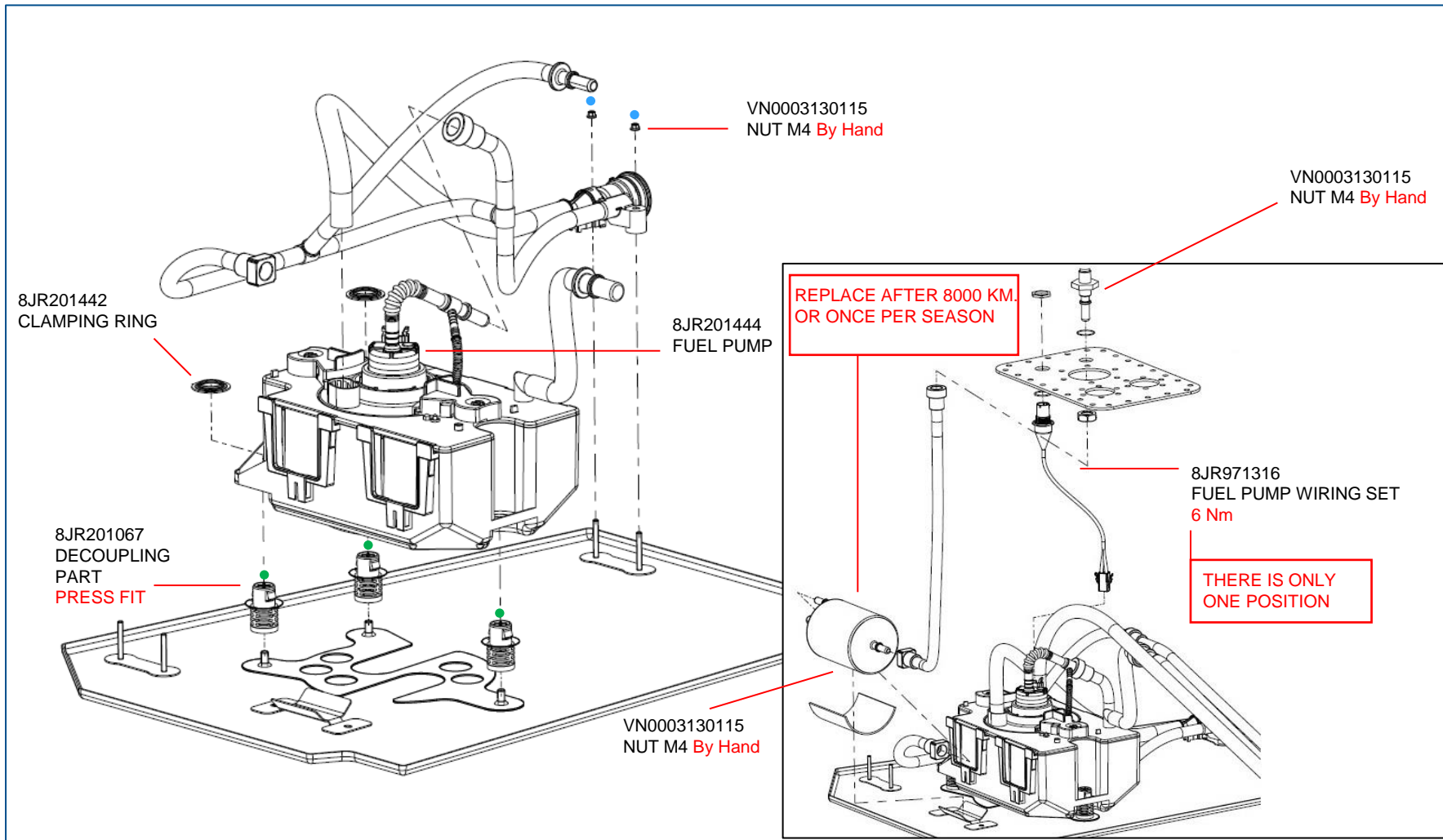




# TIGHTENING TORQUE ALTERNATOR

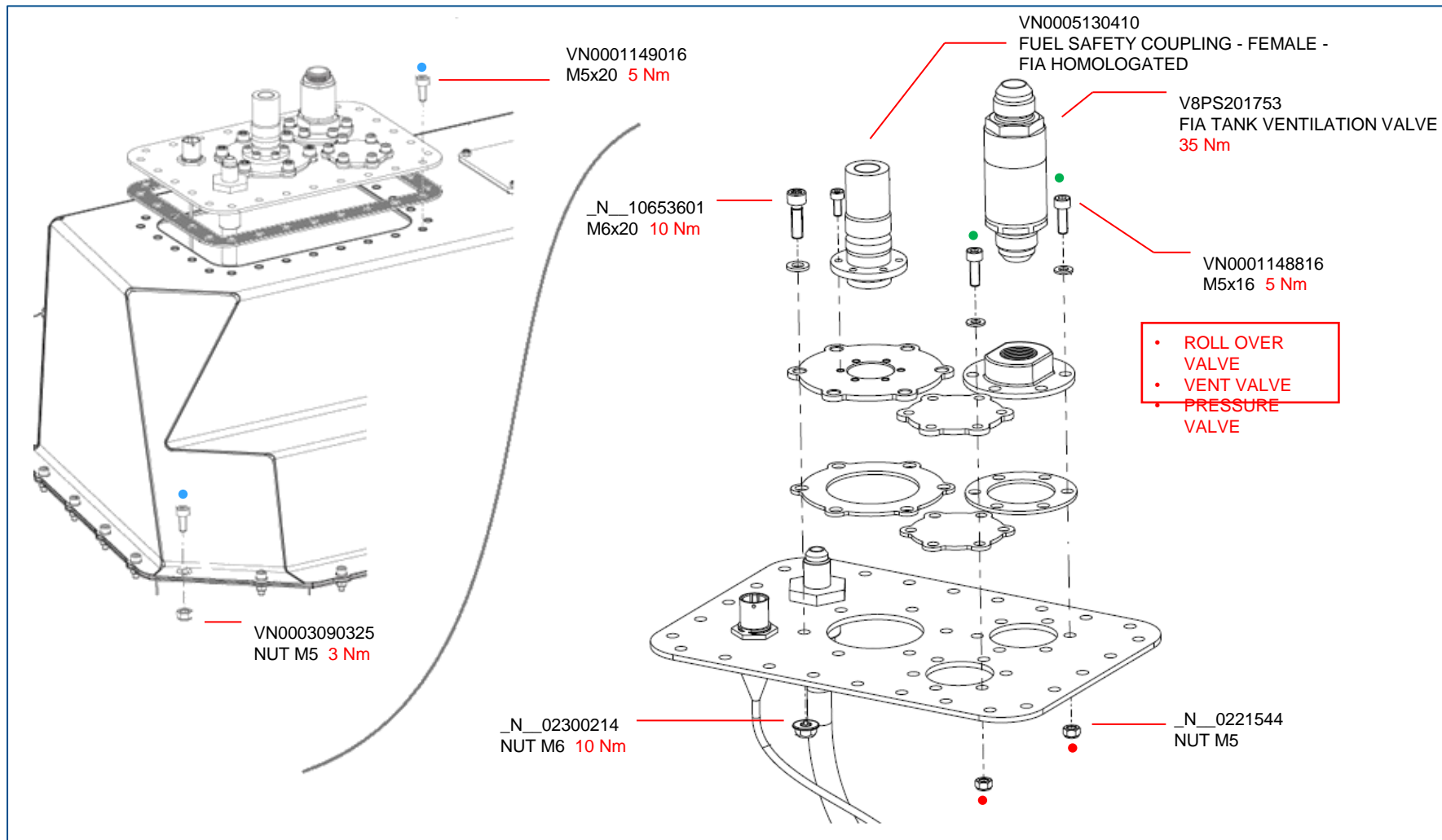


# TIGHTENING TORQUE FUEL SYSTEM



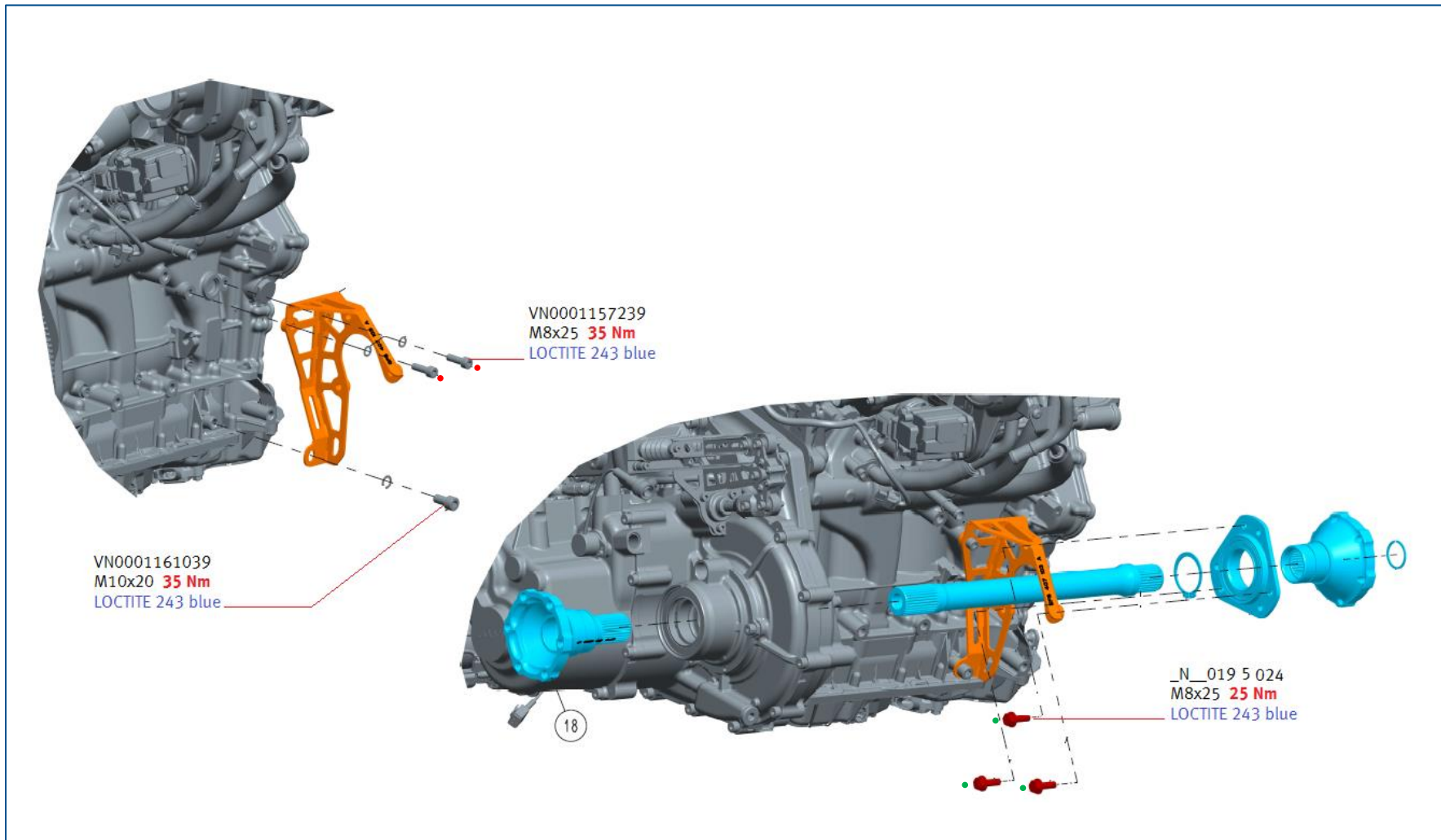


# TIGHTENING TORQUE FUEL SYSTEM

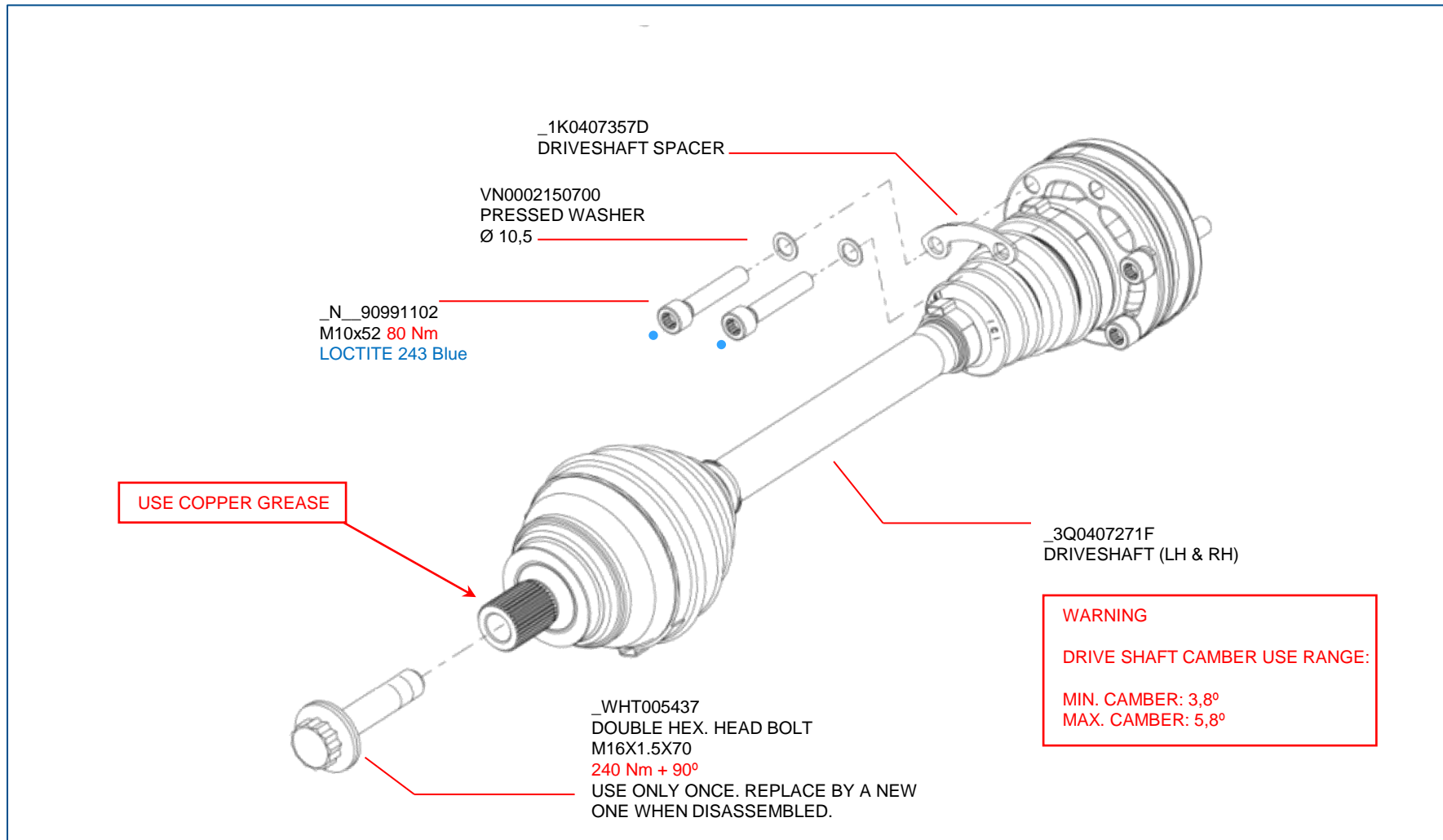


# TIGHTENING TORQUE INTERMEDIATE AXLE

**RS 3 LMS**

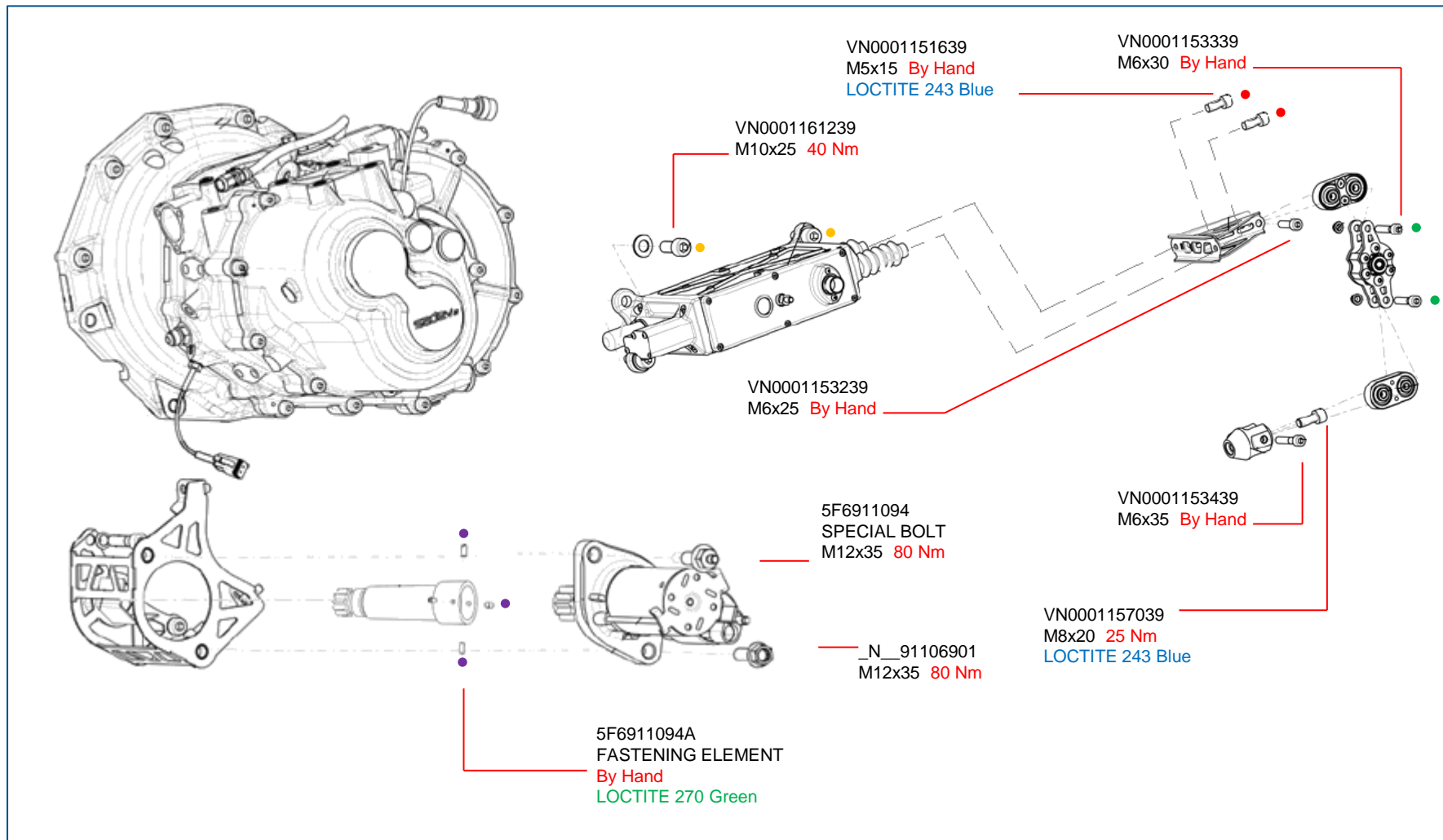


# TIGHTENING TORQUE DRIVE SHAFT

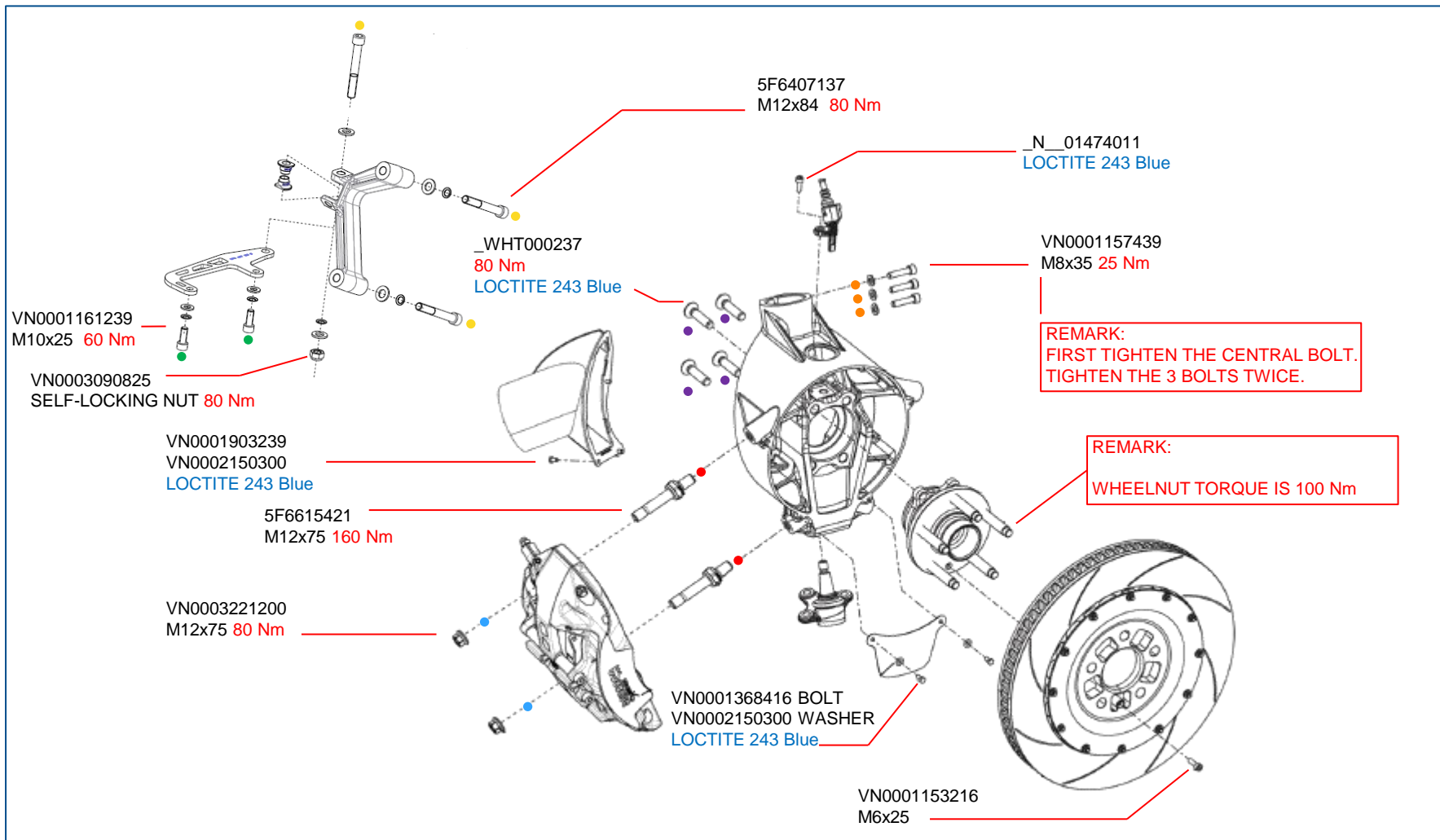


# TIGHTENING TORQUE GEAR SHIFT ACTUATOR

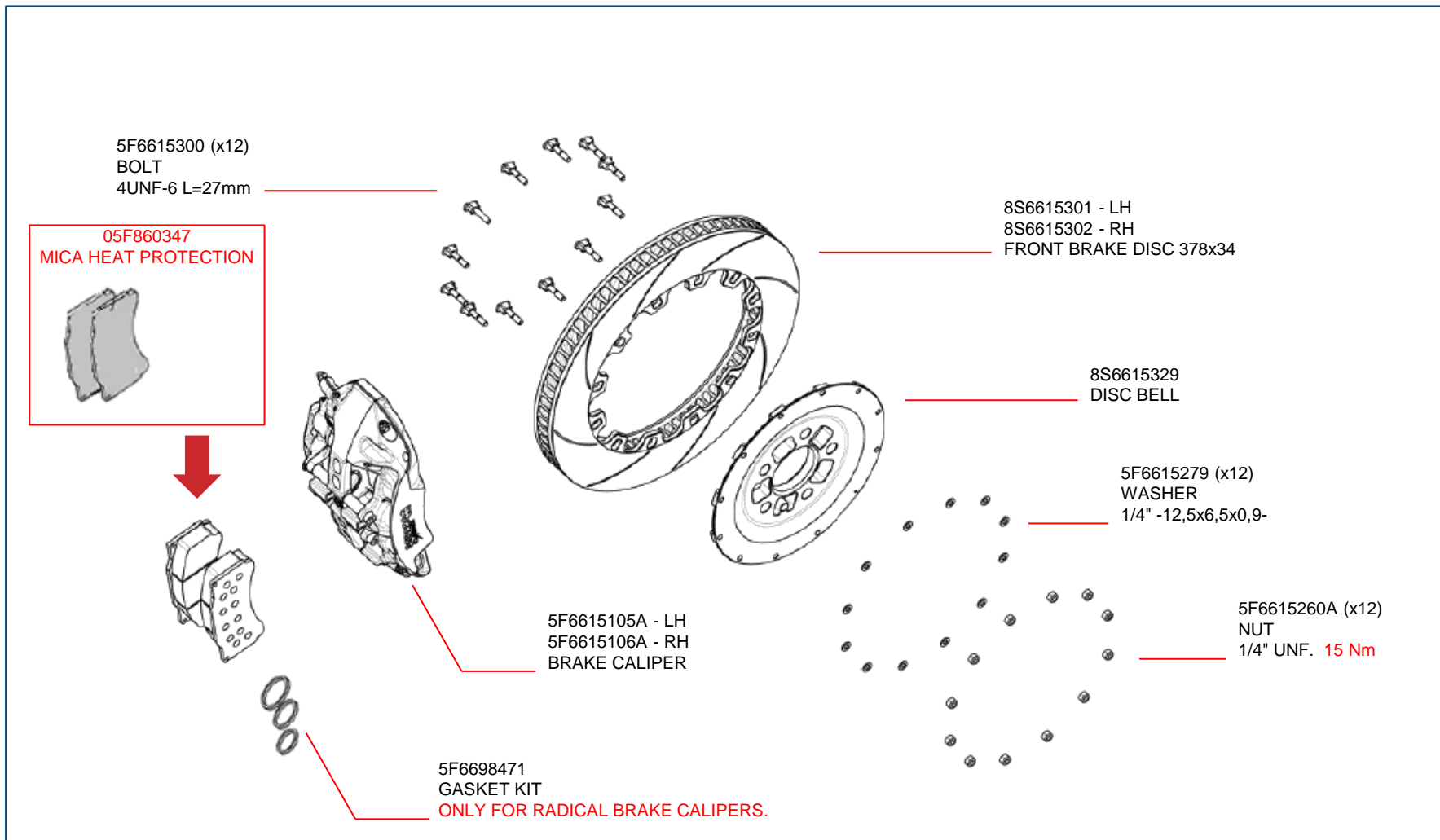
**RS 3 LMS**



# TIGHTENING TORQUE FRONT UPRIGHT AND HUB

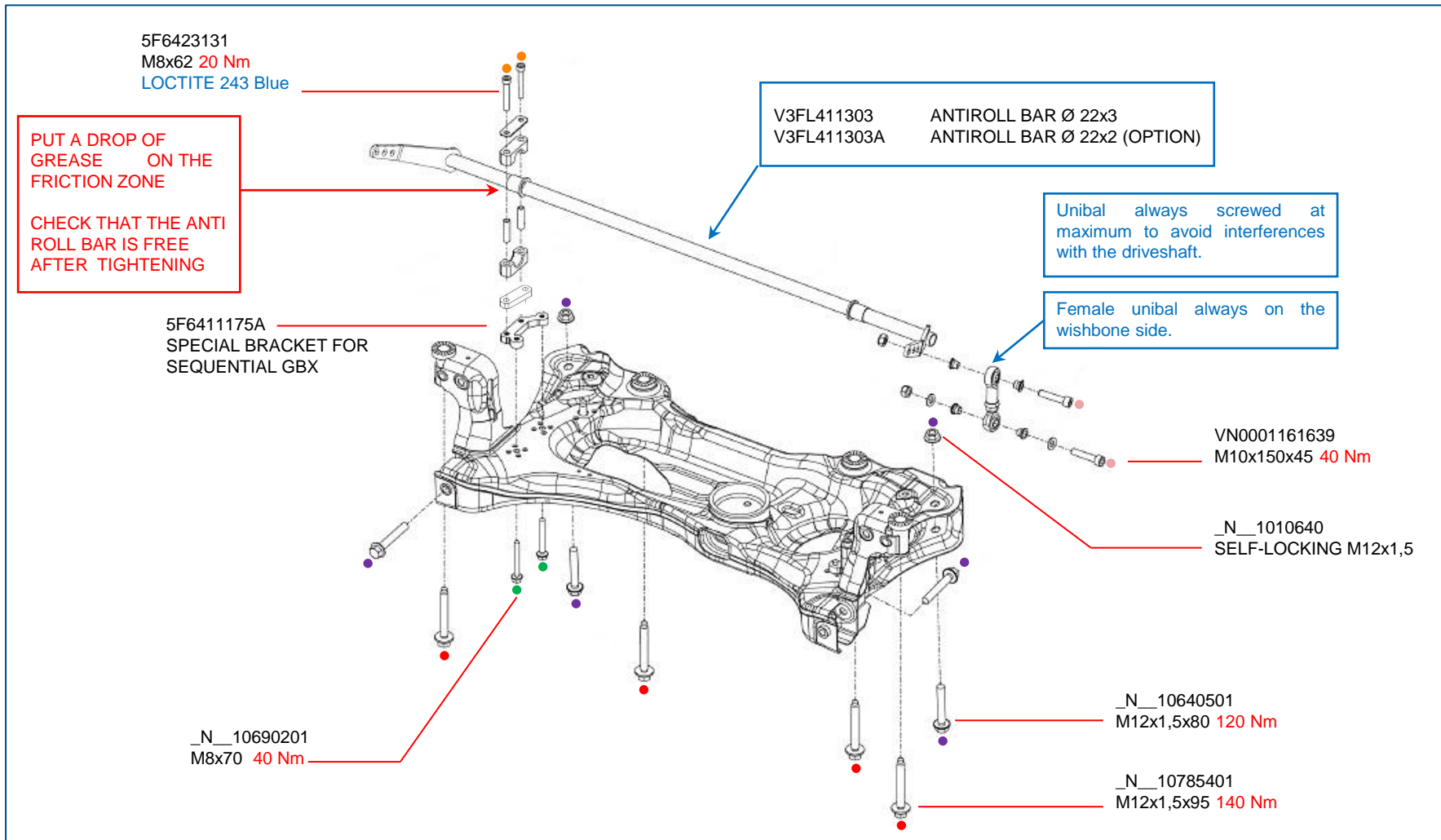


# TIGHTENING TORQUE FRONT BRAKE

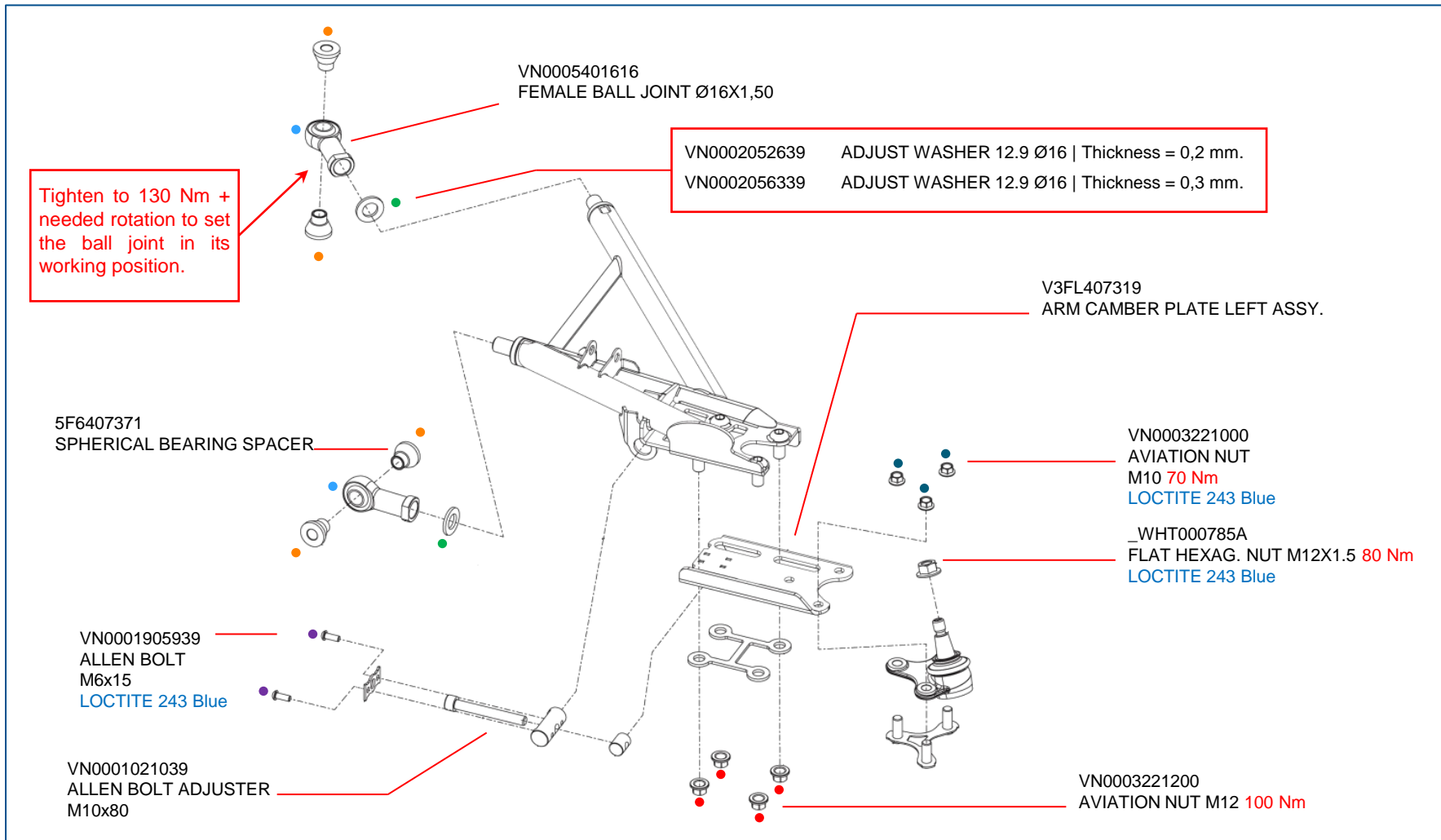




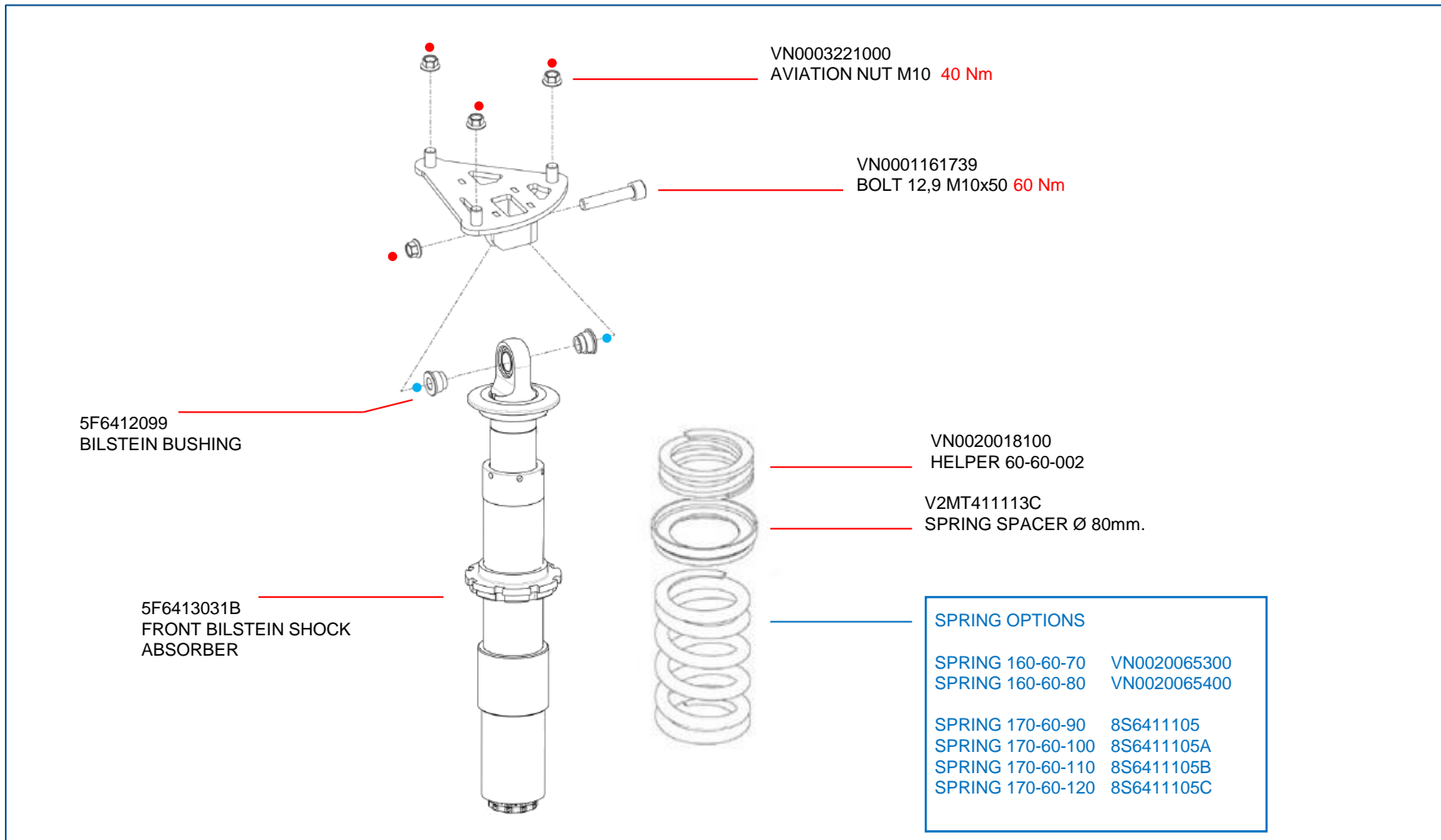
# TIGHTENING TORQUE FRONT SUBFRAME



# TIGHTENING TORQUE FRONT WISHBONE

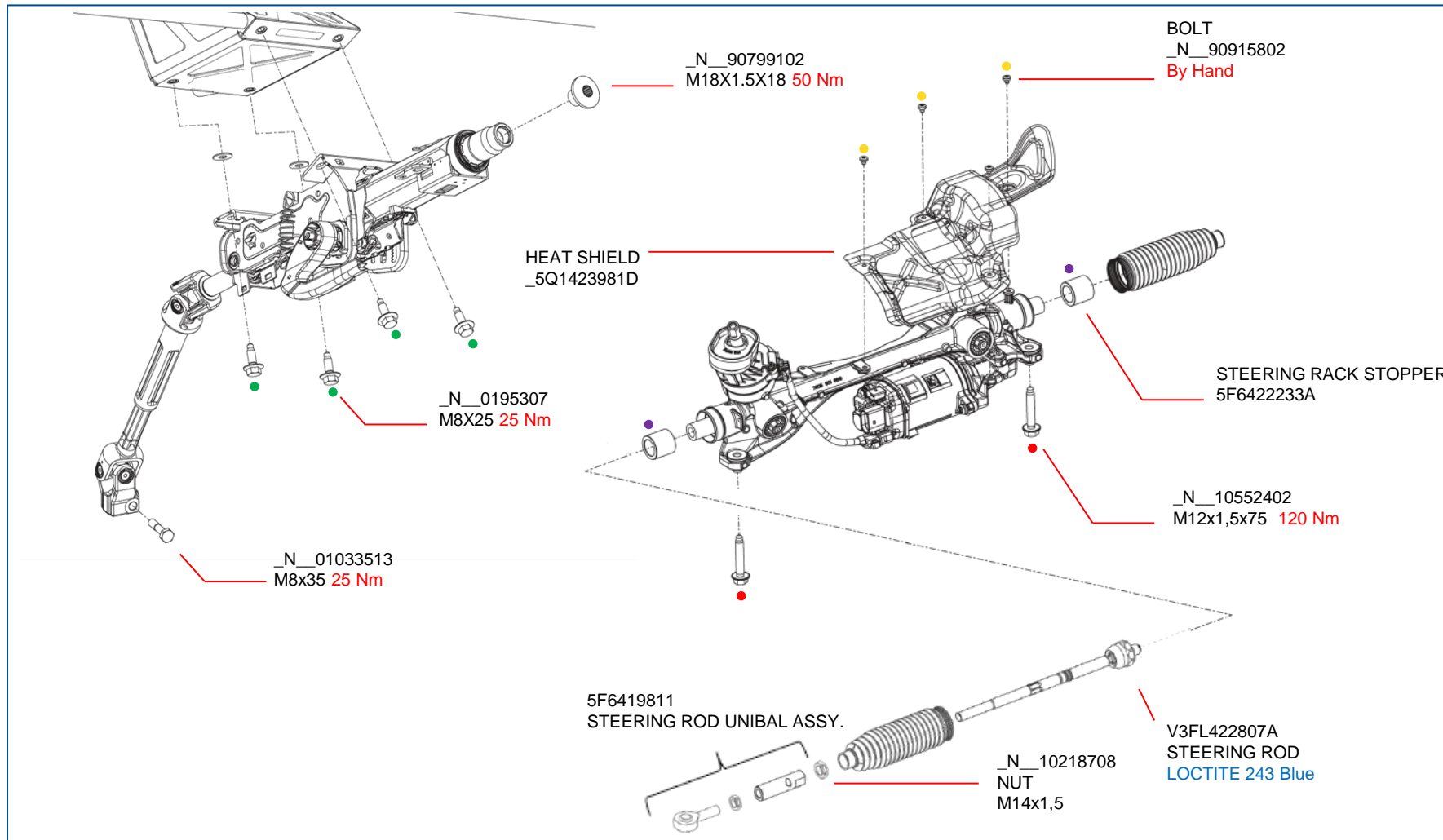


# TIGHTENING TORQUE FRONT SHOCK ABSORBER

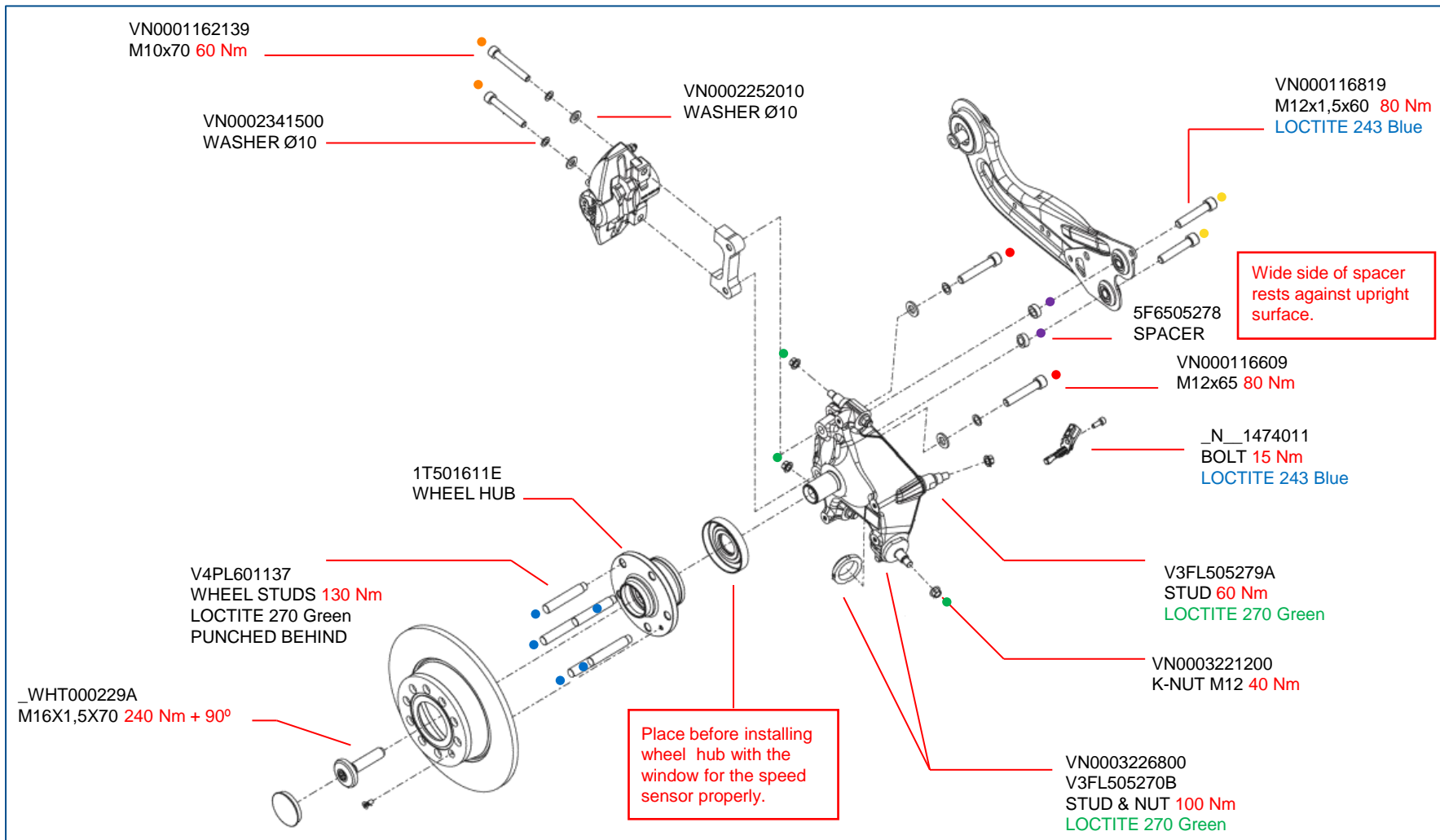


# TIGHTENING TORQUE STEERING RACK & COLUMN

**RS 3 LMS**

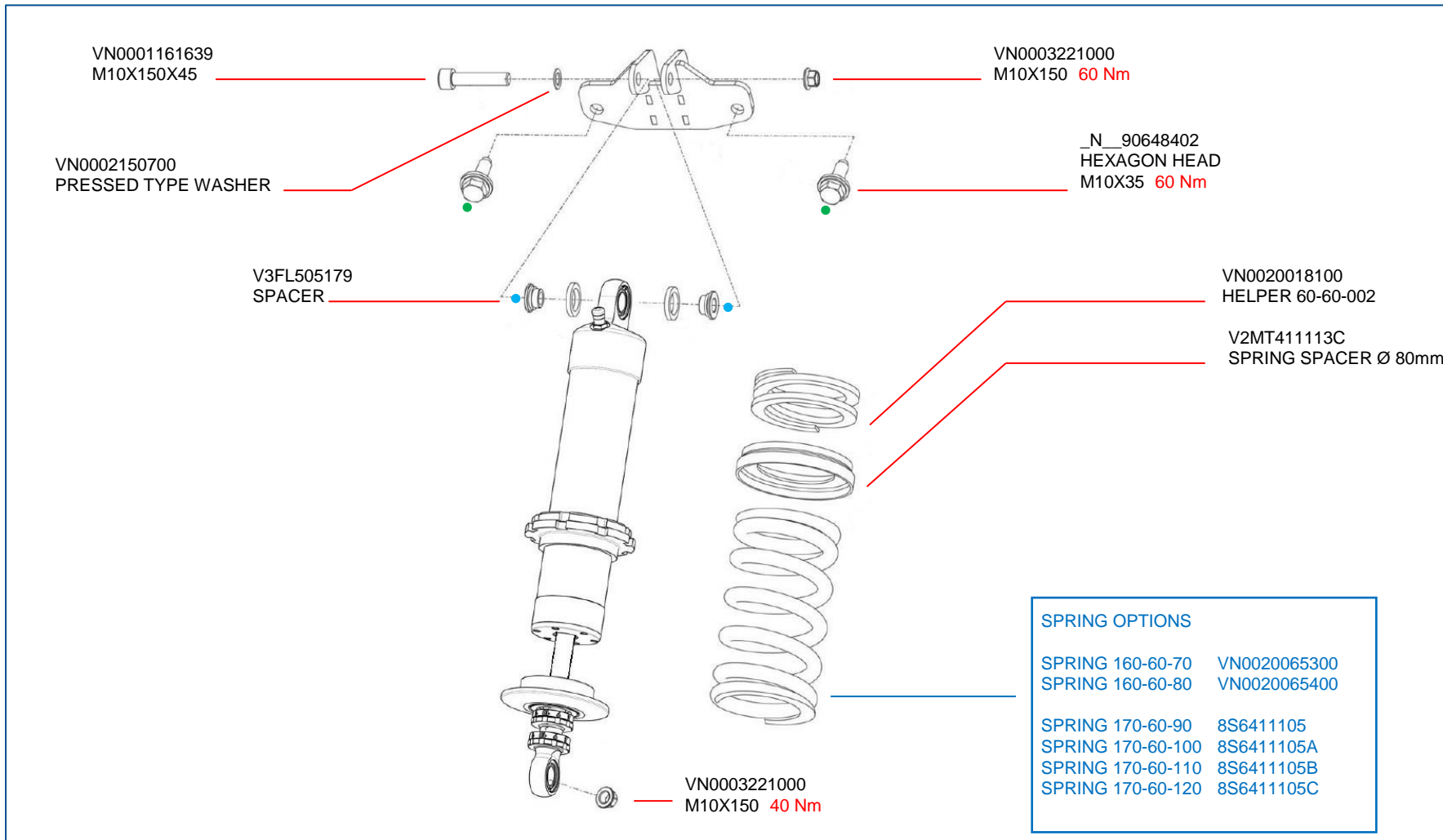


# TIGHTENING TORQUE REAR UPRIGHT



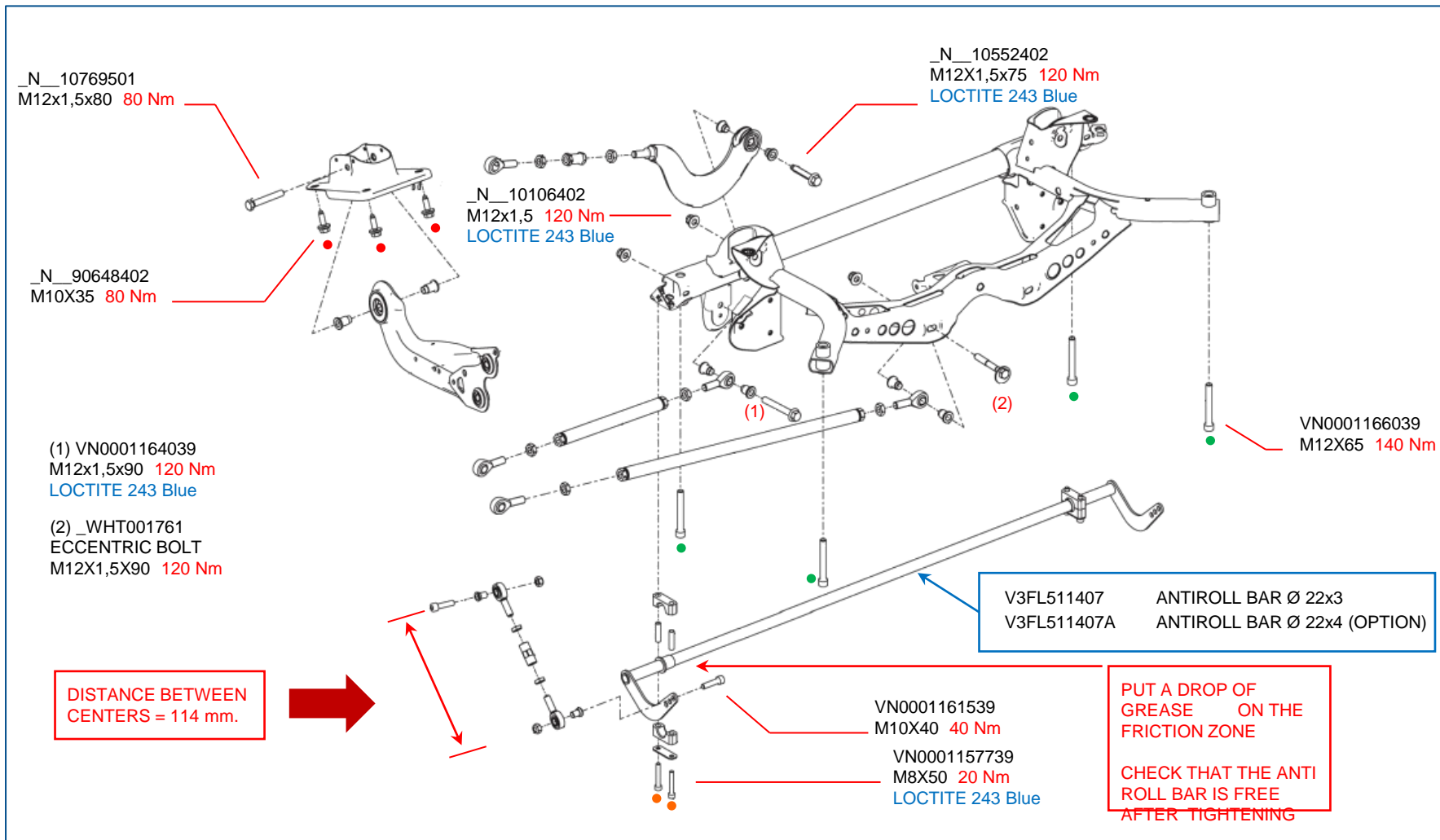
# TIGHTENING TORQUE

## REAR SHOCK ABSORBER



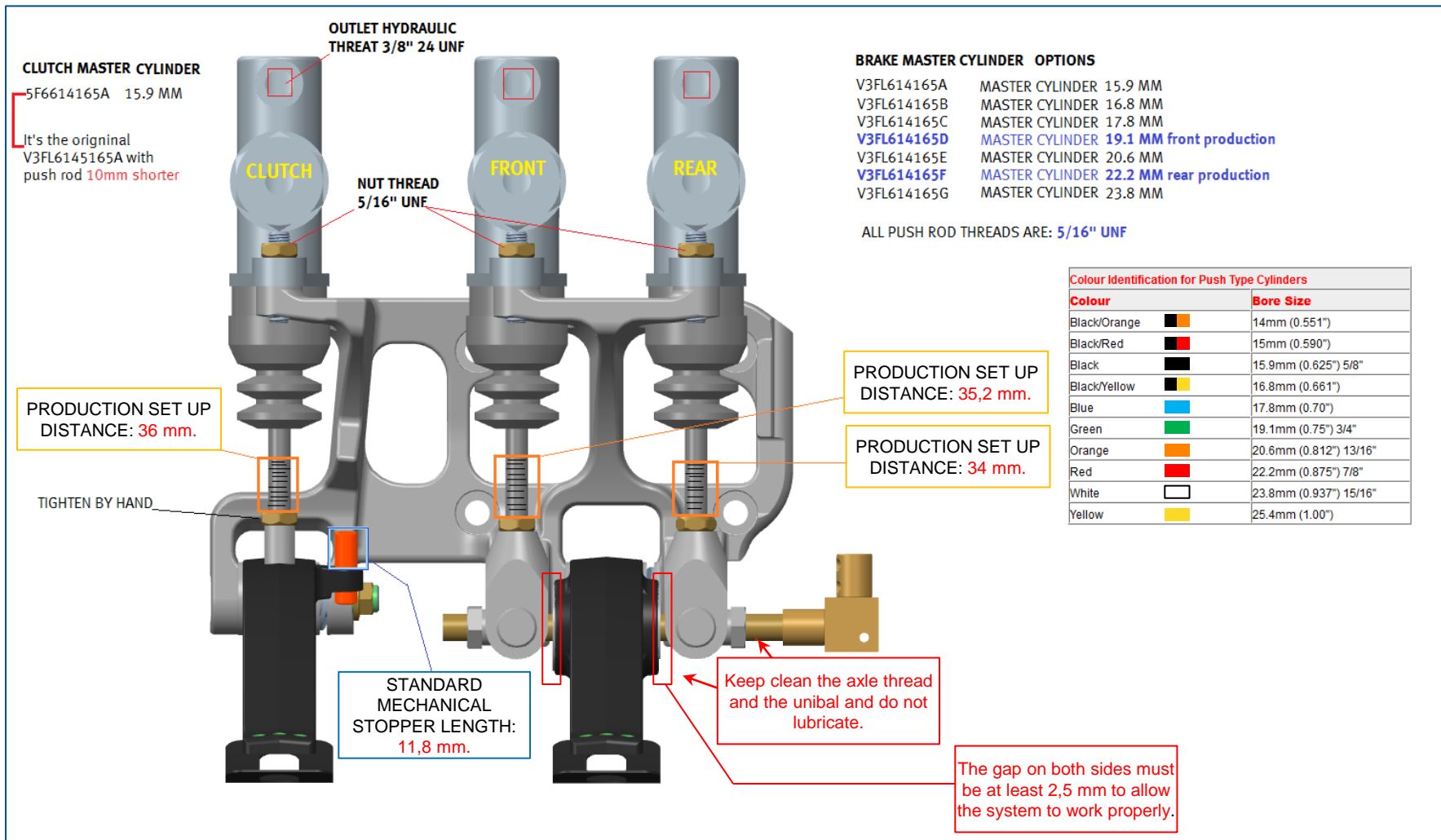


# TIGHTENING TORQUE REAR SUBFRAME



# TIGHTENING TORQUE

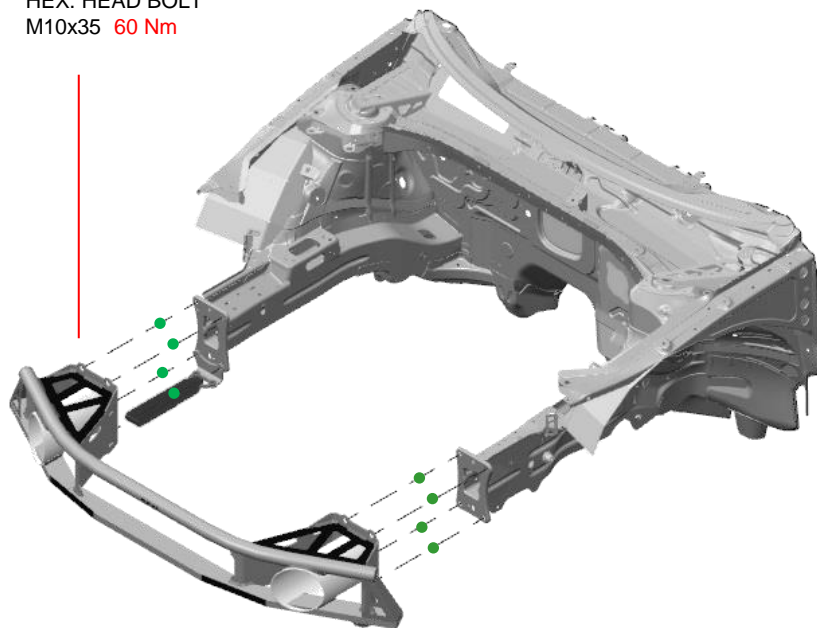
## PEDAL BOX



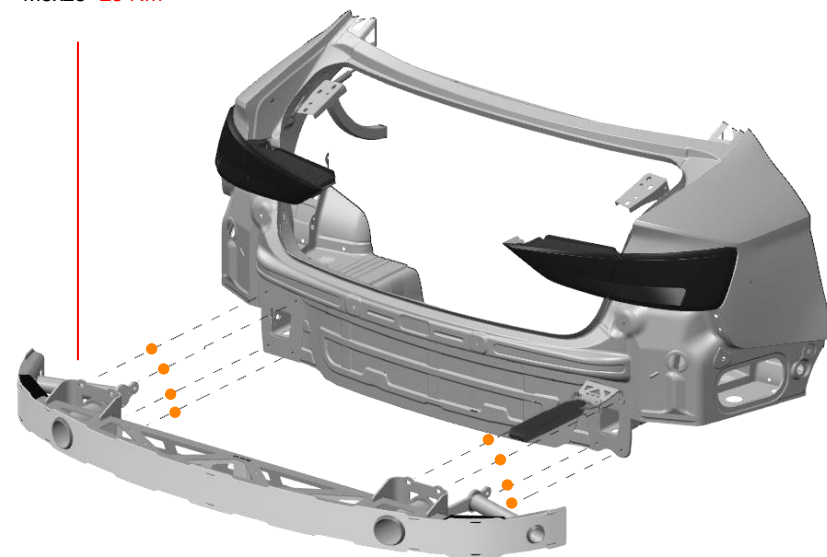
# TIGHTENING TORQUE FRONT & REAR END

**RS 3 LMS**

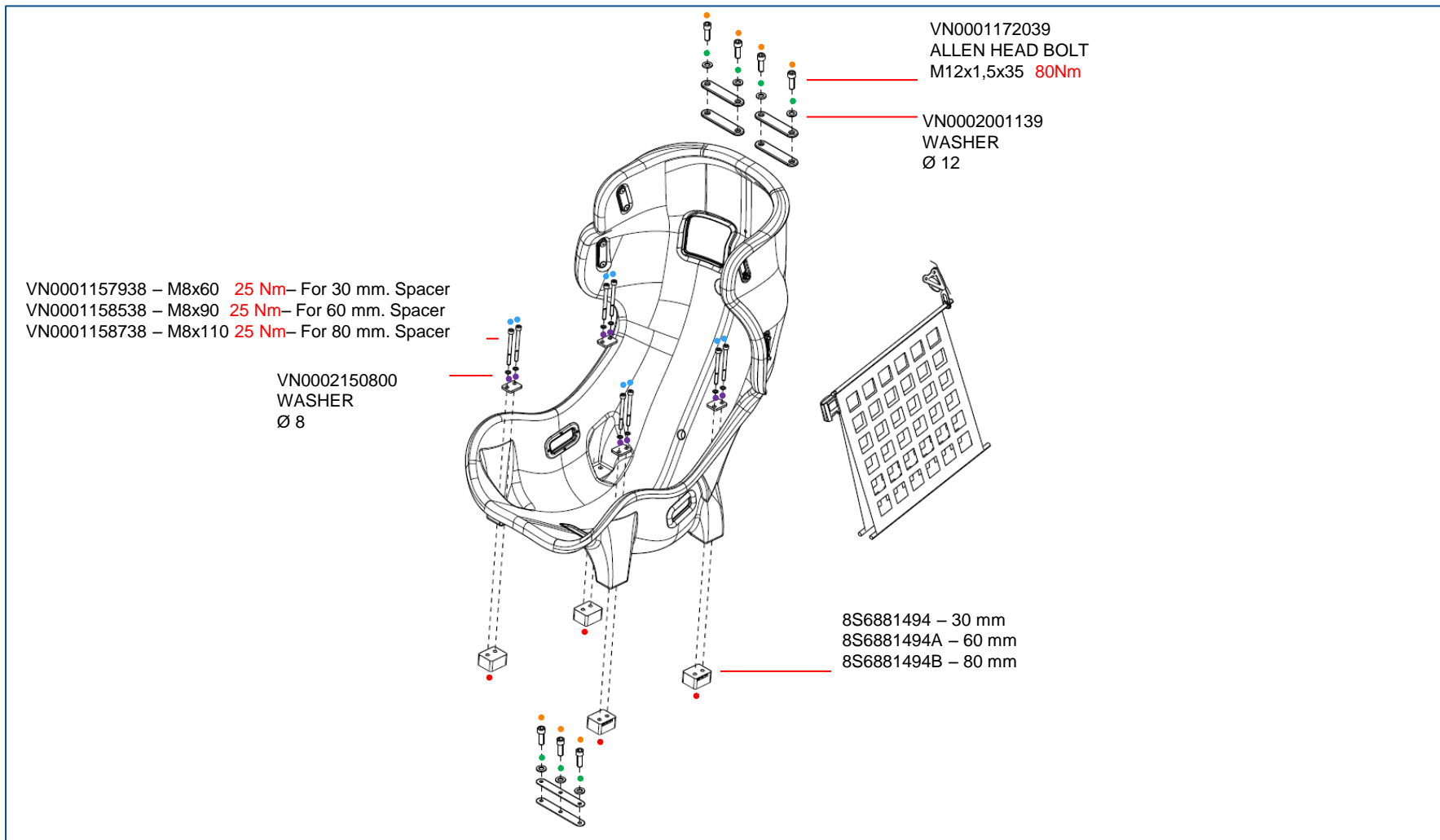
\_N\_ 91196402  
HEX. HEAD BOLT  
M10x35 **60 Nm**



\_N\_ 0195307  
HEX. HEAD BOLT  
M8x25 **25 Nm**



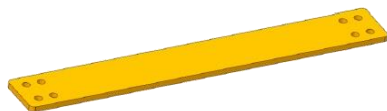
# TIGHTENING TORQUE BUCKET SEAT



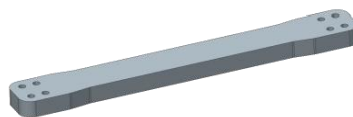
# TIGHTENING TORQUE

## BALLAST FIXATION

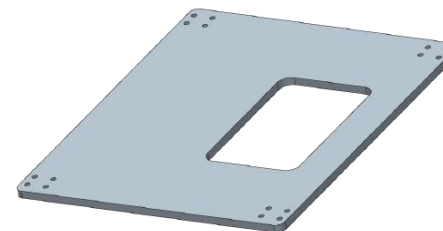
In the event that any car needs to add some extra weight, there are different shapes and sizes to be combined between them. They are detailed here below:



8S6861721  
1 KG BALLAST



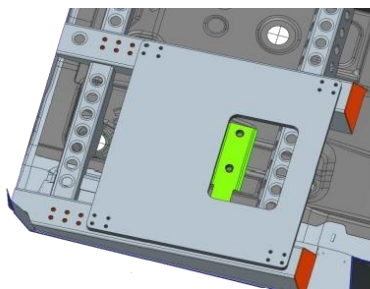
8S6861721A  
3 KG BALLAST



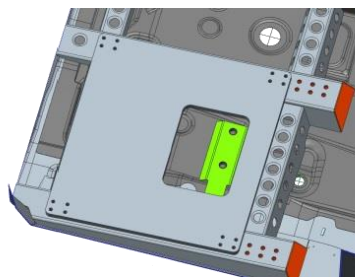
8S6861721B – 5 KG  
8S6861721C – 10 KG  
8S6861721D– 20 KG  
5, 10 & 20 KG BALLAST

To fix the different ballasts on the car, it can be done either in the co-driver and driver position and in front or rear location. In order to make a safe assembly, M8 bolts with a minimum of 12 mm thread depth is recommended.

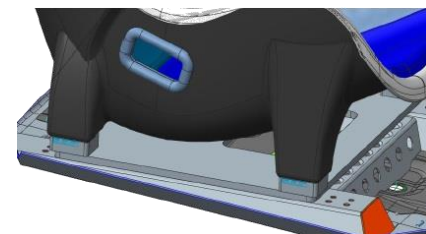
Front Location



Rear Location

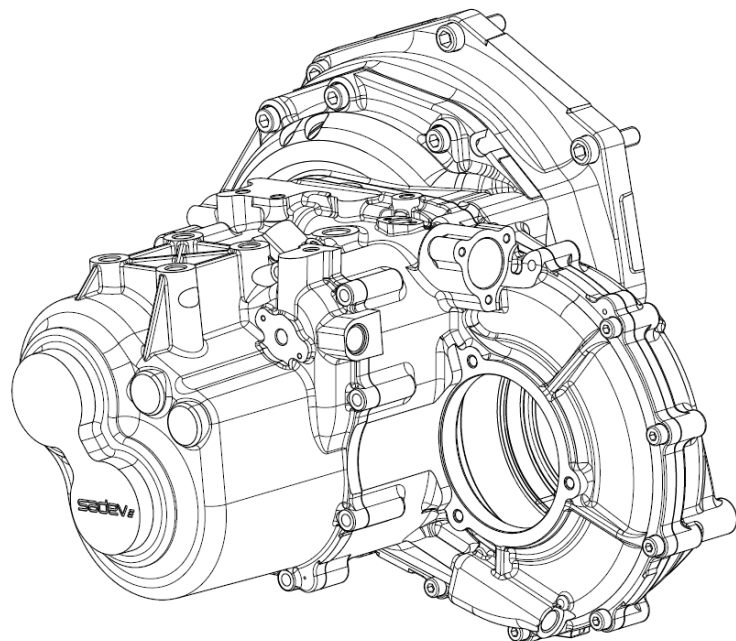


Driver Position

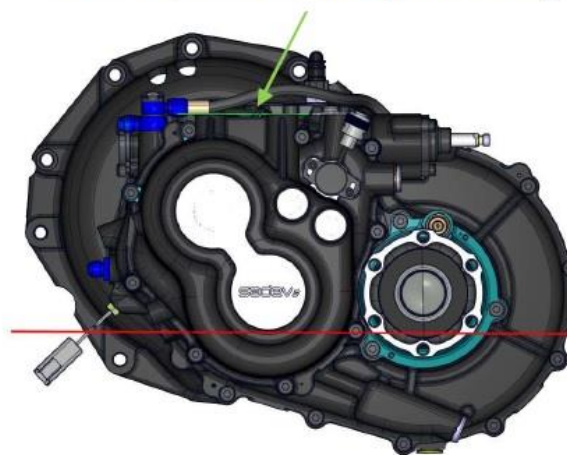


# TIGHTENING TORQUE

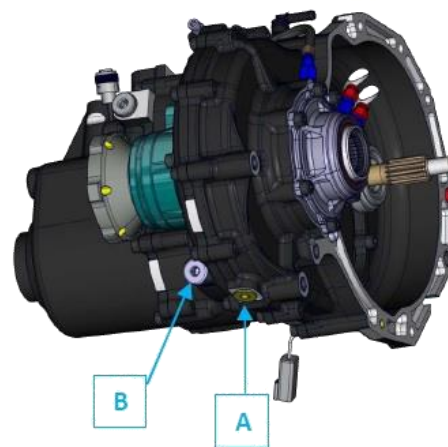
## SADEV GEARBOX – General View & Info



Horizontal position of the support on the gearbox



**OIL LEVEL**  
Without radiator: 1,5 L  
With Radiator: 1,7 L



**NOTES**

There are two drain plugs (A & B). To drain the gearbox oil both drain plugs must be disassembled and cleaned.

Drain plug A has a magnet on it. It must be cleaned. **Tightening torque: 50 Nm.**

Drain plug B has a suction screen. It must be cleaned. **Tightening torque: 50 Nm.**

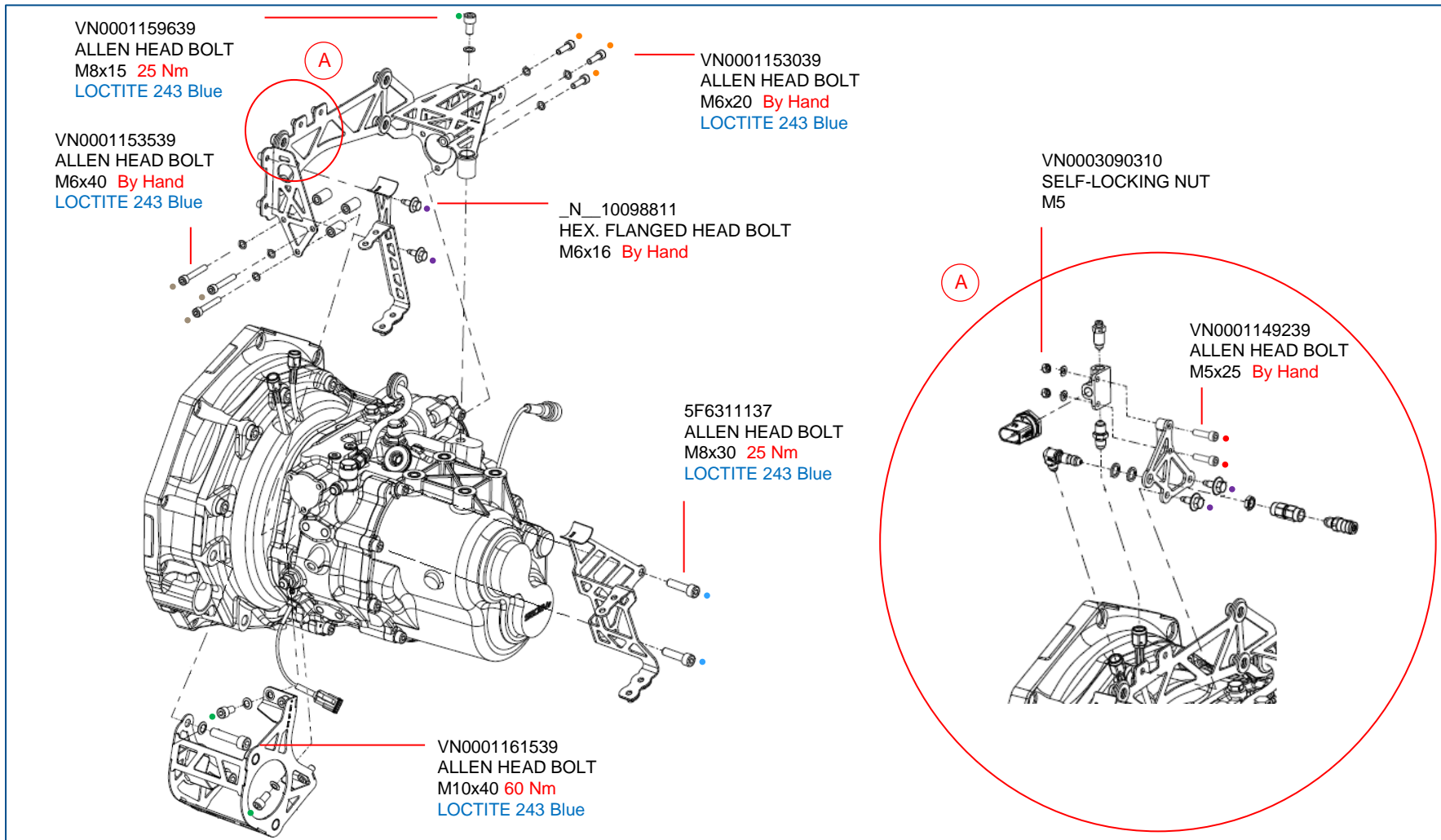
We strongly recommend to clean the threads after removing the drain plugs as some dirt and metal particles may be stuck in between.





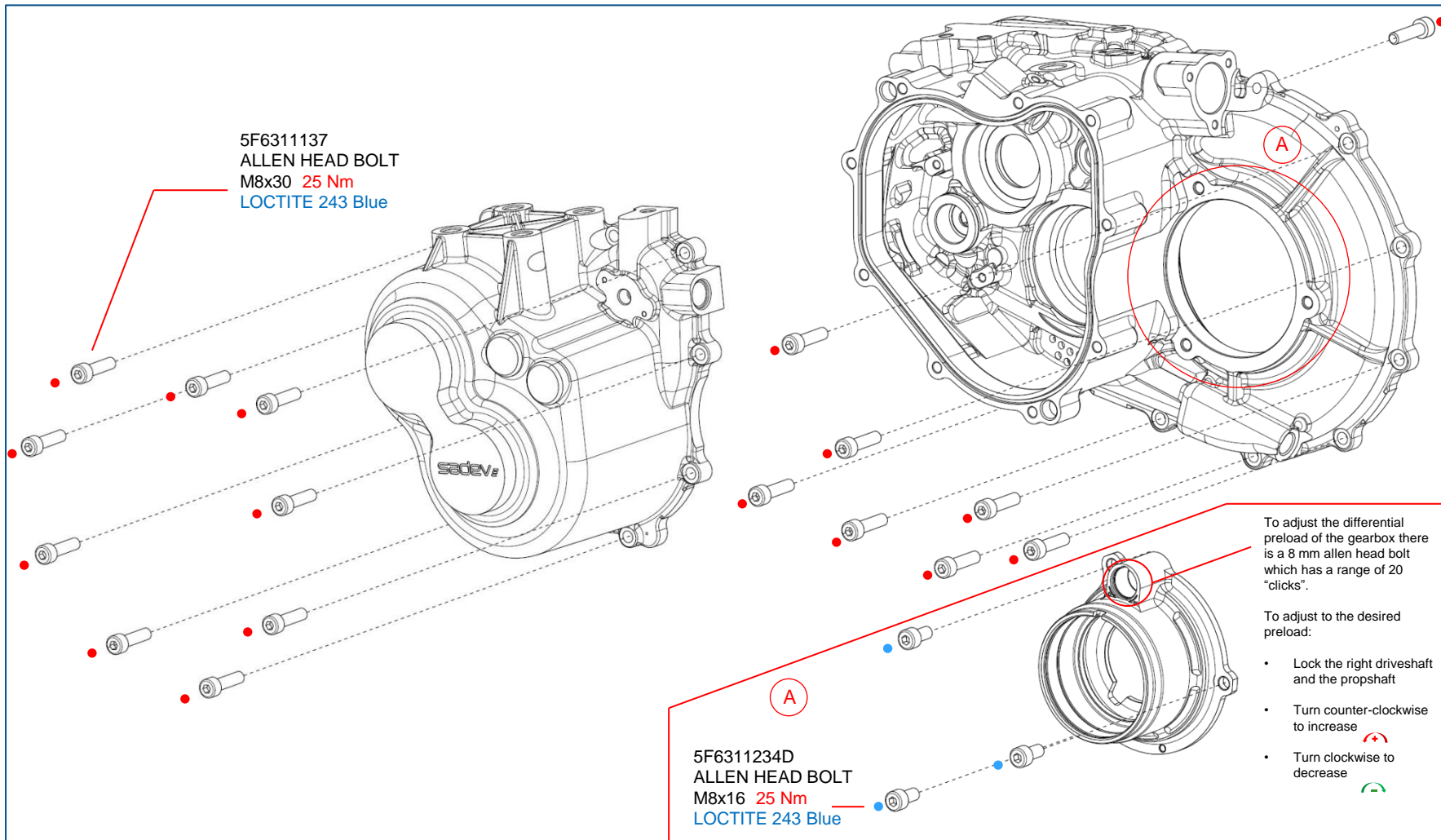
# TIGHTENING TORQUE

## SADEV GEARBOX - Supports



# TIGHTENING TORQUE

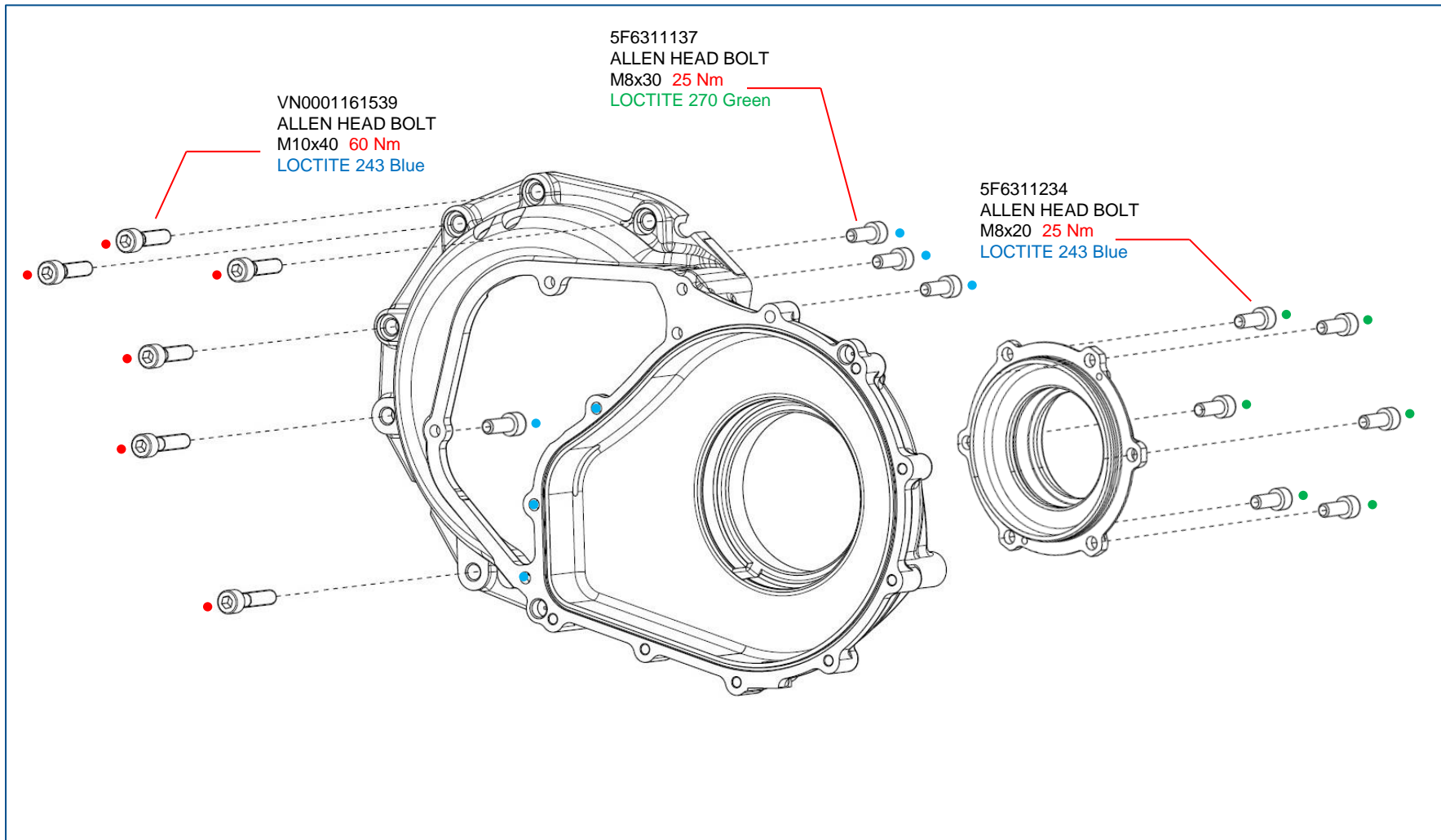
## SADEV GEARBOX – Casings



# TIGHTENING TORQUE

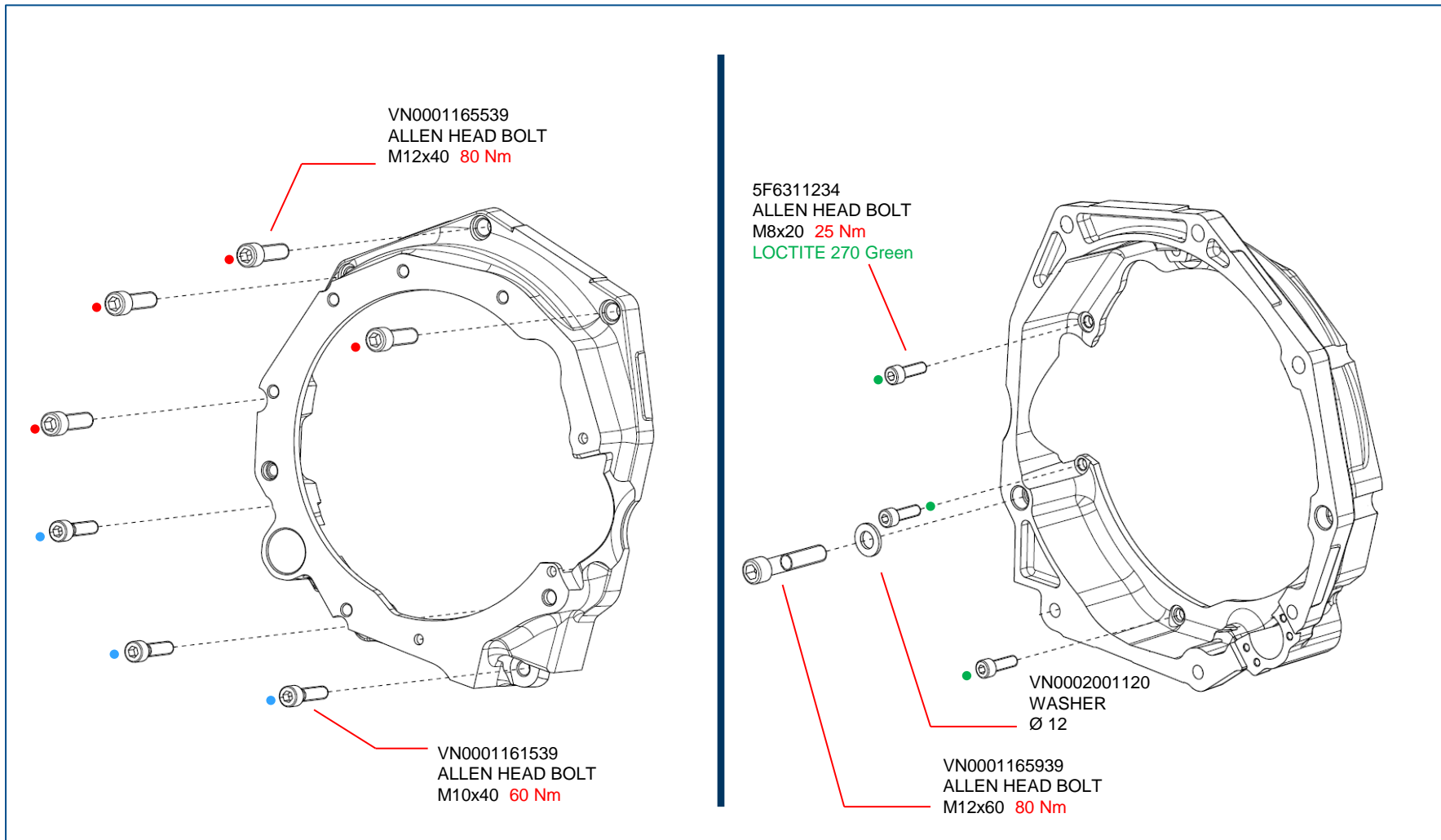
## SADEV GEARBOX – Casings

**RS 3 LMS**



# TIGHTENING TORQUE

## SADEV GEARBOX – Engine Mounting



# TIGHTENING TORQUE

## SADEV GEARBOX – Barrel Position Sensor



Once the gearbox is serviced, we strongly recommend to check that the gear position sensor works in the appropriate range as the gearbox needs the voltage values to work properly.

There is a channel for this purpose in the AIM MXG Display as shown in the picture on the left.

The values for each gear must be the ones in the table at the bottom left side of the page.

Take into account that the values may differ  $\pm 0.10$  mV.

Gear	Voltage (mV)
R	572
N	1100
1	1630
2	2160
3	2700
4	3230
5	3765
6	4300

There are two types of available connectors for the barrel sensor. They are listed here below. Please make sure that you use the proper connector for your wiring harness.

DEUTSCH CONNECTOR



SOURIAU CONNECTOR



5F6919093 – SOURIAU CONNECTOR  
5F6919093A – MILITARY CONNECTOR  
BARREL POSITION SENSOR

