

TECHNCIAL NOTE no.: 47	
Product:	ADU Software upgrade
Part number:	
To:	Cupra Leon Competición & Audi RS3 LMS
Date:	11/05/2023

Dear customer,

New Software versions for the ADU (Advanced Display Unit) from ECUMaster have been released to solve some bugs that were reported.

You will find them in the portal download area "Projects & Software":  ADUSetup_72_0_4_VAGTCR.exe

<https://vwgroupmotorsport-onlineplatform.com>

Note that in the portal you will find two folders with the difference that one folder contains project templates without "predictive lap time" layout and the other does. The reason is that although "predictive lap time" is prohibited in the 2023 TCR regulations, there are some championships with a waiver. Choose the one that corresponds to yours.

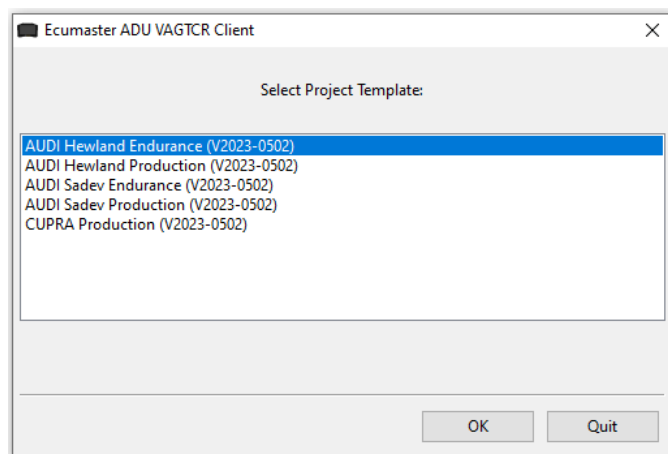
-  with Delta time
-  without Delta time

New cars are delivered without "predictive lap time" project template.

1. Installation of ECUMaster ADU VAGTCR Client Software (72_0_4)

After installing the new version of this software, in the opening process of the program, the customer must select the desired template to work with. There will be several templates already loaded to help the customers to work with them, before connecting with the car. It is important to load the proper template according to the brand name, gearbox model or type of race, to be able to use the adequate layouts, alarms, or channels.

All changes required for the 2023 season have been performed on these Project templates.



**Cupra version includes endurance and sprint templates.*

Once the template is open, if it is required, you will be able to modify and save it as a new project.

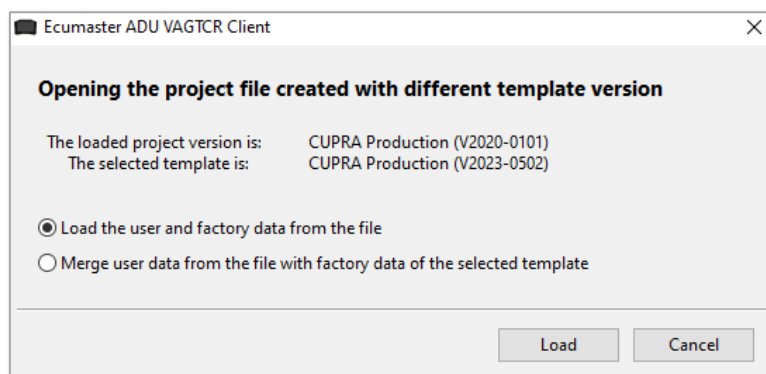
Once you are plugged in with the car, remember to click on **“Make Permanent”** icon or go to “File / Make Permanent” to store the project on the display.

Note that the new software will not ask any more for Supervisor mode because it will always open in Customer mode. If Supervisor mode is ever needed, in that case a password would be provided. For the operation you will have to go to “File / Enter SUPERVISOR mode” and introduce the password.

What about the project templates I had already created?

If you try to open an older project template with the new SW, the software will tell you that you are trying to open a project with a different template version and will ask you if you want to load the complete old project or want to merge the old user data with the new factory data.

This last option *“merge the old user data with the new factory data”* could return an Error window if some channels are different. In that case, we advise to use the latest templates and modify them according to your preferences, because some new layouts or channels have been implemented to help the drivers and we are sure they are out of failures.



2. ECUMaster Lightclient Software (v2.0)

A new version of the ECUMaster Lightclient Software has been released. In case that trying to update the GPS firmware 15.0 or trying to activate the High Rate IMU Output to get the GPS module accelerometers signals, you get an issue, the new version 2.0 is fixing it and lets you make these changes.

Properties	
Ecumaster output	<input checked="" type="checkbox"/>
Ecumaster CAN ID	0x400 Standard
Format 2 output	<input type="checkbox"/>
High rate IMU output	<input checked="" type="checkbox"/>
HR IMU CAN ID	0x408 Standard